

**NEW**

Back Bars

Solid & Glass Door

- ❑ EBB-58-B ❑ EBB-68-B ❑ EBB-94-B
- ❑ EBB-58G-B ❑ EBB-68G-B ❑ EBB-94G-B

STANDARD FEATURES

● HEAVY DUTY CONSTRUCTION

Top made of solid 18 gauge stainless steel for easy cleaning. Wear resistant black vinyl exterior, and galvanized interior with durable stainless steel floor, and coved corners. Ecomate® insulation foamed in place.

● FIELD INTERCHANGEABLE DOORS

Solid to Glass and Glass to solid based on operator's needs.

● DUAL PANE THERMA GLASS in "G" Models

Black aluminum frame, merchandise your product with greater visibility.

● ENHANCED REFRIGERATION SYSTEM

Factory engineered oversized and balanced refrigeration system. CFC free R-13A refrigerators maintain temperatur between 33°F to 38°F, keeping beers ice cold.

● LEFT SIDE MOUNT COMPRESSOR & FRONT BREATHING

System allows easy service and unrestricted placement for the unit even in narrow spaces.

● ANALOG THERMOSTAT

● STAY OPEN DOORS WITH LOCKS AND LIGHT

90°F stay open door feature and LED light underneath the mullion.

● ADJUSTABLE, COATED WIRE SHELVES

Creating three levels to fit tall boy beers.

● GREATER USABLE INTERIOR CAPACITY

Evaporator located on left side above compressor providing greater working interior capacity: 23-1/4" Depth x 32-1/2" Height.

● MAGNETIC GASKET

Built of one piece, the gaskets are removable without tools for ease of cleaning and replacement.



EBB-58-B



EBB-94G-B

ACCESSORIES

Additional shelves



ISO 9001

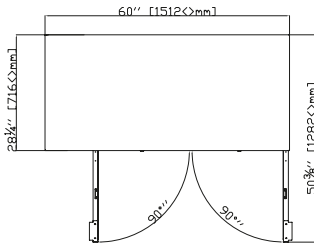
MODEL	DOORS	CAPACITY 12 Oz Can	SHELVES	AMPS	HP	VOLTAGE	NEMA PLUG	Cord Length	Cabinet Dimensions			Shipping		
									W"	D"	H"	Wt. lbs.	Cubes	
SOLID DOOR														
EBB-58-B	2	852	4	6.6	1/3	115/60/1	5-15P	8'	59 1/2"	28"	37"	343	51	
EBB-68-B	2	1,014	4	6.6	1/3	115/60/1	5-15P	8'	69 1/2"	28"	37"	370	59	
EBB-94-B	3	1,302	6	7.2	1/3	115/60/1	5-15P	8'	95 1/2"	28"	37"	429	81	
GLASS DOOR														
EBB-58G-B	2	852	4	6.6	1/3	115/60/1	5-15P	8'	59 1/2"	28"	37"	343	51	
EBB-68G-B	2	1,014	4	6.6	1/3	115/20/1	5-15P	8'	69 1/2"	28"	37"	370	59	
EBB-94G-B	3	1,302	6	7.2	1/3	115/60/1	5-15P	8'	95 1/2"	28"	37"	429	81	



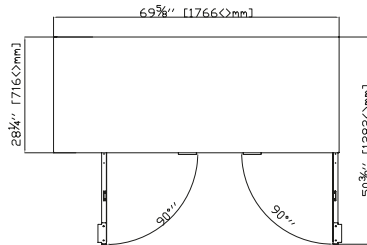
Back bar

Solid & Glass Door

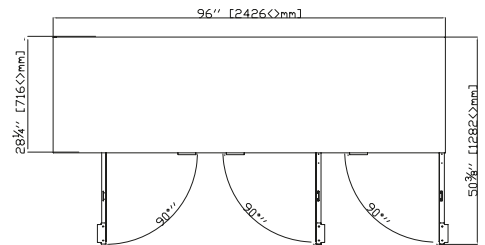
EBB-58(G)-B Top



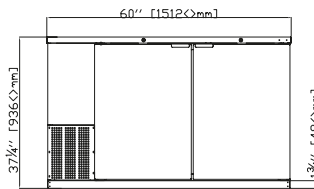
EBB-68(G)-B Top



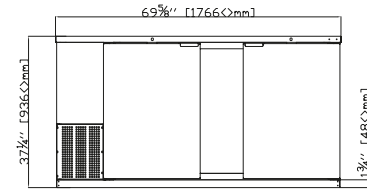
EBB-94(G)-B Top



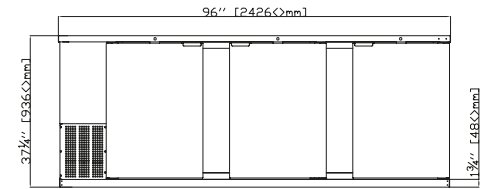
EBB-58(G)-B Front



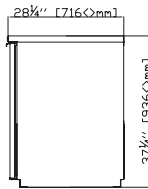
EBB-68(G)-B Front



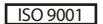
EBB-94(G)-B Front



Common Side View



* Specifications



CONSTRUCTION

- Stainless steel 18 gauge top and stylish black vinyl finish front, sides and back. Interior built is galvanized steel walls with coved corner stainless steel floor. Interior LED light.
- The entire cabinet has 1-1/2" CFC-free polyurethane insulation foamed in place.

DOORS & SHELVES

- Field interchangeable doors from Solid to Glass and glass to solid. With 90°F stay open feature, light and locks standard. One piece magnetic gasket for easy cleaning.
- Dual pane glass doors in "G" models with black aluminum frame.
- Adjustable, coated wire shelves, two per door, standard.

REFRIGERATION SYSTEM

- Oversized and balanced refrigeration system.
- Self-contained capillary tube system using environmentally friendly & CFC-free refrigerant. R-134A holding temperature at 33°F to 38°F.
- Front breathing/side mounted compressor for ease of service and placement in narrow spaces. Condensing unit is behind the front grill, slides out for easy cleaning and maintenance.

- Forced air cooling system for faster cooling and constant temperature in the cabinet.
- Large fan motor and fan blades for better air circulation.
- Self contained system, no plumbing necessary.
- Analog thermostat.

ELECTRICAL

- The whole unit is completely pre-wired at factory with cord and plug set included and ready for final connection to a 115/60/1 phase.

WARRANTY

Continental USA & Canada:

- **One year:** Labor and parts warranty.
- **Five year:** Compressor warranty.
- **International:** One year parts only.