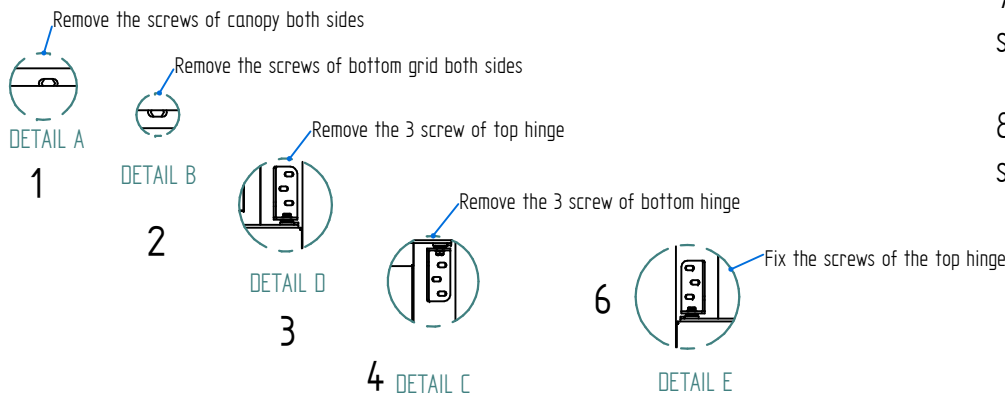


DIRECTIONS

These are the steps to change of side the door (right - left)

- 1.- Remove the screws of canopy to open it and have acces to the top hinges of the door
- 2.- With open door, remove the screws of bottom grid to have acces to the bottom hinges of the door
- 3.- Remove the 3 screw of top hinge and hold the door in the same position, be careful because the door will be loose
- 4.- Remove the 3 screw of bottom hinge and remove the door with their hinges, be careful because the door will be completly loose
- 5.- Turn the door as shown in the picture and fix the screws of the bottom hinge with the close door
- 6.- Fix the screws of the top hinge with close door.
- 7.- With open door, fix the screws on bottom grid, this is the opposite step that number 2
- 8.- Close the canopy and fix the last screws, this is the opposite step that number 1.



Revision	Diseño/Designed	Aprobo/Approved	Fecha/ Data	Noticia de Ingenieria/Engineering Notification
Historial de Revisiones / Revision History				

ONNERA GROUP ONNERA México S.A. de C.V.	DISENO/DESIGNED BY I DE LA ROSA	FECHA/DATE 12/03/19	TOLERANCIAS GENERALES/ OVERALL TOLERANCES	
	APROBADO/APPROVED BY G TORRES	FECHA/DATE 12/03/19	DIAMETRO/ DIAMETER +/- 0.5 MM	LINEAL/ LINEAR +/- 1.0 MM
TITULO/TITLE	CODIGO/CODE 19057961	PESO/WEIGHT 0.0000 KG	ANGULO/ ANGLE +/- 1.0°	
DESCRIPCION/DESCRIPTION	MATERIAL N/A	CALIBRE/GAUGE N/A	P. BAAN/BAAN W. N/A	
			NO. HOJA/SHEET N° 1 OF 1	