



ITEM #

Back Bar Slim Line

EBB-24-48G-B EBB-24-60G-B EBB-24-72G-B

STANDARD FEATURES

⌘ **HEAVY DUTY CONSTRUCTION**

Top made of solid 18" gauge stainless steel for easy cleaning. Wear resistant black vinyl exterior, and galvanized interior with durable stainless steel floor, and coved corners. Ecomate® insulation foamed in place.

⌘ **DUAL PANE THERMA GLASS DOORS**

Black aluminum frame, merchandise your product with greater visibility.

⌘ **ENHANCED REFRIGERATION SYSTEM**

Factory engineered oversized and balanced refrigeration system. R-290 Hydrocarbon refrigerators maintain temperature between 33 °F to 38 °F, keeping beers ice cold.

⌘ **LEFT SIDE MOUNT COMPRESSOR & FRONT BREATHING**

System allows easy service and unrestricted placement for the unit even in narrow spaces.

⌘ **ANALOG THERMOSTAT**

⌘ **STAY OPEN DOORS WITH LOCKS AND LIGHT**

90° stay open door feature and LED light underneath the mullion.

⌘ **ADJUSTABLE, COATED WIRE SHELVES**

⌘ **GREATER USABLE INTERIOR CAPACITY**

Evaporator located on left side above compressor providing greater working interior capacity.

⌘ **24" DEPTH FOR LIMITED SPACE INSTALLS**

⌘ **MAGNETIC GASKET**

Built of one piece, the gaskets are removable without tools for ease of cleaning and replacement.



EBB-24-48G-B



EBB-24-60G-B



EBB-24-72G-B



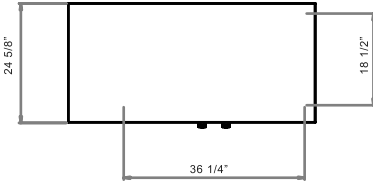
MODEL	DOORS	CAPACITY 12 oz. can	SHELVES	AMPS.	HP	VOLTS	NEMA PLUG	CORD LENGTH	CABINET DIMENSIONS			SHIPPING	
									WIDTH	DEPTH	HEIGHT	WEIGHT	Ft ³
GLASS DOORS													
EBB-24-48G-B	2	300	4	2.0	1/4	115/60/1	5-15P	8'	49 5/8"	24 5/8"	35 1/2"	238	48
EBB-24-60G-B	2	390	4	2.0	1/4	115/20/1	5-15P	8'	62 3/4"	24 5/8"	35 1/2"	291	55
EBB-24-72G-B	3	540	6	2.0	1/4	115/60/1	5-15P	8'	72"	24 5/8"	35 1/2"	356	77

* Depth does not include 1" Bumper

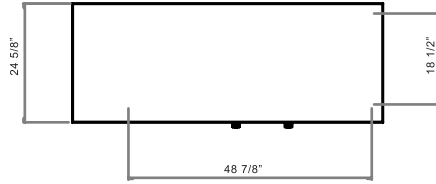


Back Bar Slim Line

EBB-24-48G-B TOP



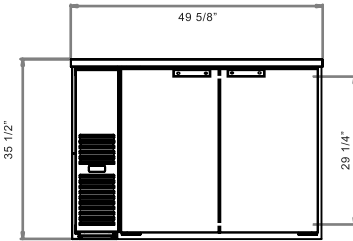
EBB-24-60G-B TOP



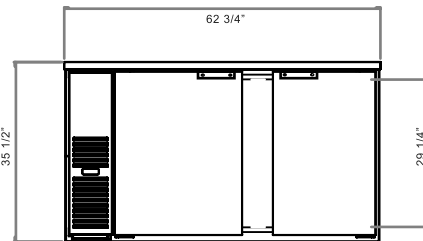
EBB-24-72G-B TOP



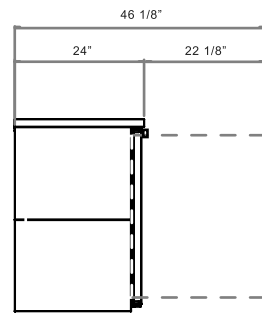
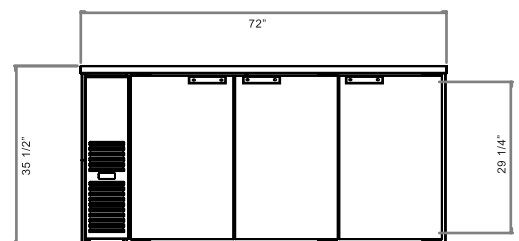
EBB-58G-B FRONT



EBB-68G-B FRONT



EBB-94G-B FRONT



COMMON SIDE VIEW



* Specifications



CABINET CONSTRUCTION

- 18 gauge stainless steel top and stylish black vinyl finish front, sides and back. Interior built is galvanized steel walls with coved corner stainless steel floor. Interior LED light.
- Then entire cabinet has 1-1/2" CFC-free polyurethane insulation foamed in place.

DOORS & SHELVES

- Built of one piece, the gasket is removable without tools for ease of cleaning and replacement. Door's in step design gives added protection to the freezers gasket.
- 3 Adjustable epoxy coated wire shelves per unit.

REFRIGERATION SYSTEM

- Oversized and balanced refrigeration system.
- Self-contained capillary tube system using environmentally friendly hydrocarbon refrigerant. R-290 holding temperature at 33 °F to 38 °F.
- Front breathing/side mounted compressor for ease of service and placement in narrow spaces. Condensing unit is behind the front grill, slides out for easy cleaning and maintenance.
- Forced air cooling system for faster cooling and constant temperature in the cabinet.
- Large fan motor and fan blades for better air circulation.
- Self contained system, no plumbing necessary.
- Analog thermostat.

ELECTRICAL

- The whole unit is completely pre-wired at factory with cord and plug set included and ready for final connection to a 115/60/1 phase.

WARRANTY

Continental US & Canada:

- **One year** labor and parts warranty.
- **Five years** compressor warranty.
- **International:** one year parts only.