



BEVERAGE-AIR

Project: _____

AIA#

Item: _____

Location: _____

SIS#

Approved: _____

DW HORIZONTAL BOTTLE COOLERS

DW49HC Deep Well Series

Hydrocarbon Series

MODEL:
DW49HC-B-29



DW49HC Deep Well Series: Frosty Brew Bottle Cooler

3 Year Parts/Labor Warranty
Additional 2 Year Compressor Warranty

CABINET CONSTRUCTION

- Exterior construction includes wear-resistant vinyl on steel in black finish
- Interior is galvanized with stainless steel floor
- Full electronic control
- Tops include easy glide, stainless steel lids and stainless steel counter top
- Countertop with integral glass stops
- Three (3) Epoxy coated adjustable wire dividers
- Bottle cap & cap catcher standard
- Forced air refrigeration system holds product between 30° - 32°F
- Constructed with high cooling RPM fans to provide fast cooling



DWHC49-B-29

OPTIONS & ACCESSORIES

- Stainless steel exterior
- Stainless steel interior
- Lid Locks
- 3" casters or 6" Adjustable leg with plate
- Remote option

REFRIGERATION SYSTEM

- Refrigerant is R290 to comply with all environmental safety concerns
- Oversized self-defrosting evaporator to move air and larger coil for greater cooling capacity
- Balanced, forced-air, lift-out refrigeration system provides rapid chilling of product
- Automatic, non-electric evaporator



3779 Champion Blvd., Winston-Salem, NC 27105
1-888-845-9800 Fax: 1-336-245-6453
Beverage-Air.com sales@bevair.com



BEVERAGE-AIR

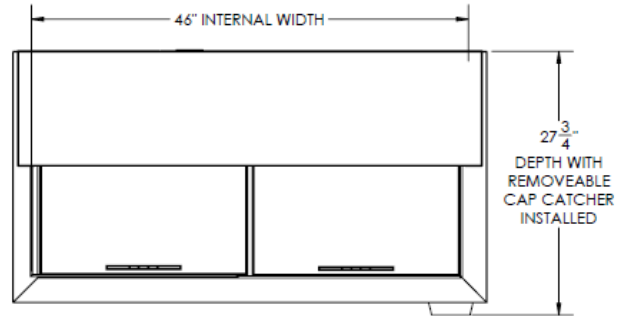
Horizontal Bottle Coolers

Deep Well Models

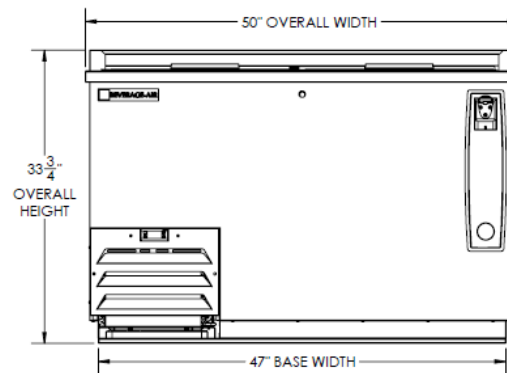
Models: DW49HC-B-29

| MODEL | DW49HC-B-29 |
|--------------------------------------|--------------|
| EXTERNAL DIMENSIONAL DATA | |
| Width Overall | 50" |
| Depth Overall | 26 1/2" |
| Depth Overall with Cap Catcher | 27 3/4" |
| Height Overall | 33 3/4" |
| Number of Lids | 2 |
| INTERNAL DIMENSIONAL DATA | |
| NET Capacity (cubic ft.) | 13.7 |
| Internal Width Overall (in) | 46" |
| Internal Depth Overall (in) | 22 3/4" |
| Internal Height Overall at Step (in) | 15 1/2" |
| Internal Height Overall (in) | 26 3/4" |
| Number of Dividers | 3 |
| 12 oz. Bottle Capacity | 17 1/2 Cases |
| 12 oz. Can Capacity | 23 3/4 Cases |
| ELECTRICAL DATA | |
| Full Load Amperes 115/60/1 | 2.5 |
| REFRIGERATION DATA | |
| Horsepower | 1/4 |
| Capacity (BTU/Hr)* | 1702 |
| WEIGHT DATA | |
| Gross Weight (Crated lbs) | 272 lbs |
| Height - Crated | 40" |
| Width - Crated | 53" |
| Depth - Crated | 29 1/2" |

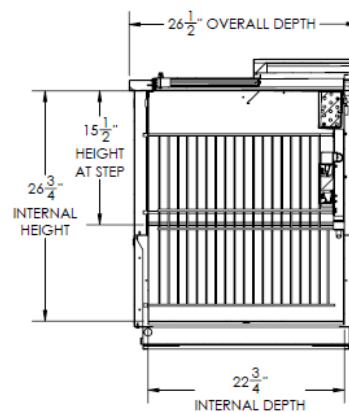
Model Views



Plan View



Elevation View



Side View

ELECTRICAL CONNECTION



115/60/1
NEMA-5-15P

Units pre-wired at factory and include 8' long cord and plug set.



an Ali Group Company



The Spirit of Excellence

3779 Champion Blvd., Winston-Salem, NC 27105
1-888-845-9800 Fax: 1-336-245-6453
Beverage-Air.com sales@bevair.com