



BEVERAGE-AIR

Project: _____	AIA#
Item: _____	
Location: _____	SIS#
Approved: _____	

RB BOTTOM MOUNT REACH-IN REFRIGERATORS

RB23HC Solid Door Reach-In Refrigerator
Hydrocarbon Series

MODEL:

RB23HC-1S

3 Year Parts/Labor Warranty
Additional 2 Year Compressor Warranty



RB23-1

CABINET CONSTRUCTION

- Stainless steel front, gray painted steel sides
- Gray painted interior
- Full electronic control
- Door locks standard
- LED lighting standard
- Anti-microbial door handles and door locks are standard
- Self-closing doors
- 120° stay open door feature
- One -piece grille allow easy removal/installation for preventative maintenance
- Cartridge style hinges
- Three (3) heavy duty epoxy coated wire shelves per section standard
- 6" Caster standard
- Maintains product temperatures between 36-38° F

OPTIONS & ACCESSORIES

- 3" casters or 6" legs
- Additional epoxy shelves
- Chrome plated shelves

REFRIGERATION SYSTEM

- Refrigeration system uses R290 refrigerant to comply with all environmental concerns
- Automatic, non-electric evaporator
- System is serviceable from rear
- Epoxy coated evaporator coil

RB23HC Bottom Mount Models: Vista Series



3779 Champion Blvd., Winston-Salem, NC 27105
1-888-845-9800 Fax: 1-336-245-6453
Beverage-Air.com sales@bevair.com



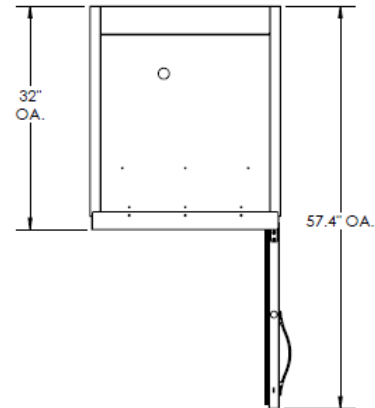
BEVERAGE-AIR

Vista Series Bottom Mount Reach-in Refrigerator

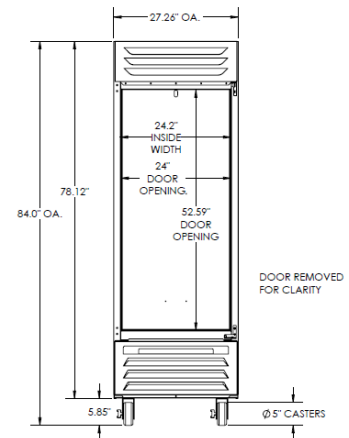
Model: RB23HC-1S

MODEL	RB23HC-1S
EXTERNAL DIMENSIONAL DATA	
Width Overall	27 1/4"
Depth Overall with Handle	33 11/16"
Height Overall (6" casters)	84"
Number of Doors	1
Depth with Door Open 90°	57 25/64"
Drawer Opening (inches)	24" x 52 19/32"
Shelf Area (square inches)	566 19/32"
INTERNAL DIMENSIONAL DATA	
NET Capacity (cubic ft.)	23.1
Internal Width Overall (inches)	24 3/16"
Internal Depth Overall (inches)	28 1/2"
Internal Height Overall—(inches)	53"
Number of shelves	3
ELECTRICAL DATA	
Full Load Amperes 115/60/1	3.0
REFRIGERATION DATA	
Horsepower	1/4
Capacity (BTU/Hr)*	1374
WEIGHT DATA	
Gross Weight (Crated lbs)	316 lbs
Height - Crated	87"
Width - Crated	30"
Depth - Crated	36"

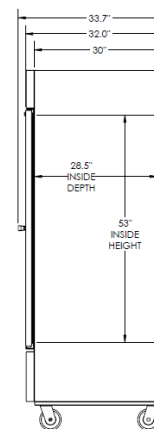
Model Views



Plan View



Elevation View



Side View

ELECTRICAL CONNECTION

Units pre-wired at factory and include 8' long cord and plug set.



115/60/1
NEMA-5-15P



an Ali Group Company



The Spirit of Excellence

3779 Champion Blvd., Winston-Salem, NC 27105
1-888-845-9800 Fax: 1-336-245-6453
Beverage-Air.com sales@bevair.com