

Model Number  
IHPA-1-12-E  
IHPA-2-24-E  
IHPA-3-36-E  
IHPA-4-48-E



9" (229 mm) sealed round plate elements with easy to clean flat surface.



Large 5" (127 mm) stainless steel landing ledge for convenient plating.



Durable cast aluminum with a Valox™ heat protection grip.



IHPA-3-36-E shown

#### ROUND PLATE ELEMENTS - 2 KW round plate elements with easy-to-clean flat surface.

- Provides a solid flat surface for fast, even heating.
- Plates are 9" (229) diameter for maximum pan contact.
- Solid top prevents spills from entering unit making clean-up easy.
- Infinite heat controls for maximum cooking flexibility.

#### EXTERIOR FEATURES - Stainless steel front, top and sides for cleanability and professional look.

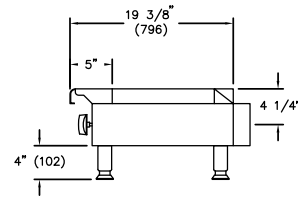
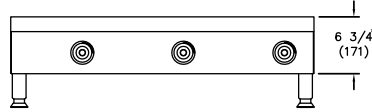
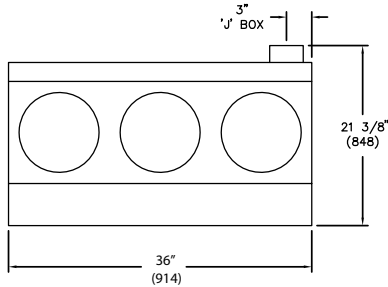
- Welded and polished stainless steel seams.
- Range Match profile when placed on a refrigerated base or equipment stand.
- Large 5" (127 mm) stainless steel landing ledge is ideal for plating.
- Control knobs are durable cast aluminum with a Valox™ "cool to the touch" grip.
- 4" (102 mm) heavy duty legs with adjustable feet.
- One year parts and labor warranty.





# HOT PLATES 19-3/8" DEPTH ELECTRIC ROUND PLATES

# IMPERIAL®



IHPA-3-36-E

## ELECTRIC HOT PLATES - 19-3/8" (492 MM) DEPTH

TOP	WIDTH	MODEL	ROUND ELEMENTS	TOTAL KW	SHIP WEIGHT (KG)	LBS
	12" (305 mm)	IHPA-1-12-E	1	2	(21)	45
	24" (610 mm)	IHPA-2-24-E	2	4	(37)	80
	36" (914 mm)	IHPA-3-36-E	3	6	(53)	115
	48" (1219 mm)	IHPA-4-48-E	4	8	(64)	140

Measurements in ( ) are metric equivalents.

ELECTRICAL REQUIREMENTS				
MODEL	TOTAL KW	VOLTS	PH	AMPS
IHPA-1-12-E	2	208	1	10
	2	240	1	8
IHPA-2-24-E	4	208	1	19
	4	208	3	14
	4	240	1	17
	4	240	3	13
	4	480*	3	6
IHPA-3-36-E	6	208	1	29
	6	208	3	17
	6	240	1	25
	6	240	3	15
	6	480*	3	7
	IHPA-4-48-E	8	208	1
8		208	3	29
8		240	1	33
8		240	3	25
8		480*	3	13

\* For export only, additional charge.

### CLEARANCE REQUIREMENTS

For use only on non-combustible surfaces. Provide 0" clearance from non-combustible surfaces and 8" (203 mm) from combustible surfaces.

### OPTIONS AND ACCESSORIES

- Stainless steel equipment stands
- 6" (152 mm) casters for equipment stands
- 480 volts (additional charge)

### MODEL DIMENSIONS

MODEL	DIMENSIONS
IHPA-1-12-E	12" w x 19-3/8" d x 10-3/4" h (305 x 492 x 273 mm)
IHPA-2-24-E	24" w x 19-3/8" d x 10-3/4" h (610 x 492 x 273 mm)
IHPA-3-36-E	36" w x 19-3/8" d x 10-3/4" h (914 x 492 x 273 mm)
IHPA-4-48-E	48" w x 19-3/8" d x 10-3/4" h (1219 x 492 x 273 mm)

### MODEL CRATED DIMENSIONS

MODEL	CRATED DIMENSIONS
IHPA-1-12-E	14-1/2" w x 23" d x 12" h (368 x 584 x 324 mm)
IHPA-2-24-E	26-1/2" w x 23" d x 12" h (673 x 584 x 324 mm)
IHPA-3-36-E	38-1/2" w x 23" d x 12" h (965 x 584 x 324 mm)
IHPA-4-48-E	50-1/2" w x 23" d x 12" h (1283 x 584 x 324 mm)



1128 Sherborn Street Corona, CA 92879  
800.343.7790 Ph: 951.281.1830 Fx: 951.281.1879  
www.imperialrange.com  
E-mail: imperialsales@imperialrange.com