

PATRIOT



INSTRUCTION MANUAL **FMCVYT-120** **CONVEYOR TOASTER**

This manual contains important information regarding your Patriot unit. Please read this manual thoroughly prior to equipment set-up, operation and maintenance. Failure to comply with regular maintenance guidelines outlined in this manual may void the warranty.

WARNINGS

- Do not touch any hot surfaces
- Do not immerse unit, cord or plug in liquid at any time
- Unplug cord from outlet when not in use and before cleaning
- Plug only into a 3-hole grounded electrical outlet of appropriate voltage
- Do not operate unattended
- Do not use this unit for anything other than intended use
- Do not use outdoors
- Always use on a firm, dry and level surface at least 12" from walls or any other obstruction
- Do not use if unit has a damaged cord or plug, in the event the appliance malfunctions, or has been damaged in any manner
- Keep children and animals away from unit
- Any incorrect installation, alterations, adjustments and/or improper maintenance can lead to property loss and injury. All repairs should be done by authorized professionals only
- Ensure that the designated power supply is adequate for continual usage and the voltage is correct

INSTALLATION

1. Remove the unit and all packing materials from the carton and remove protective covering from the unit and parts.
2. Remove tape from the discharge chute, crumb tray and toast collector pan.
3. If the unit is not level, use the feet to level.
4. The toast feed ramp is installed at the factory and can be used in two positions:
 - When in the upright position, the toaster is set for automatic feed. Bread products enter the toaster by placing them on the feed ramp and releasing.
 - For manual feeding of product, tip the feed ramp until it rests on top of the unit. In this position bread products can be manually loaded by placing them directly on the conveyor belt.
5. Install toast crumb tray directly below the conveyor belt and below the stop pins. Insert until the front of the crumb tray meets the stop pins.

TO USE

1. Plug toaster into a properly grounded electrical outlet.
2. Rotate the Rotary switch in the high-heat position.
3. Turn the Color Control to the lightest position while the unit heats up. (Note: Allow approximately 15 to 20 minutes for a warm-up period.)
4. After warm-up period, set the Color Control to the medium position and toast two slices of bread product then re-adjust the Color Control to the desired setting. (Note: To toast moist products such as English Muffins, rye bread or whole wheat, slow the conveyor by turning the Color Control knob to a darker setting clockwise).
5. This unit can be used for one sided toasting, such as buns and English Muffins by rotating the rotary switch to the top side heat only.
6. Never use the toaster when the crumb tray is not in place.

POWER SAVE MODE

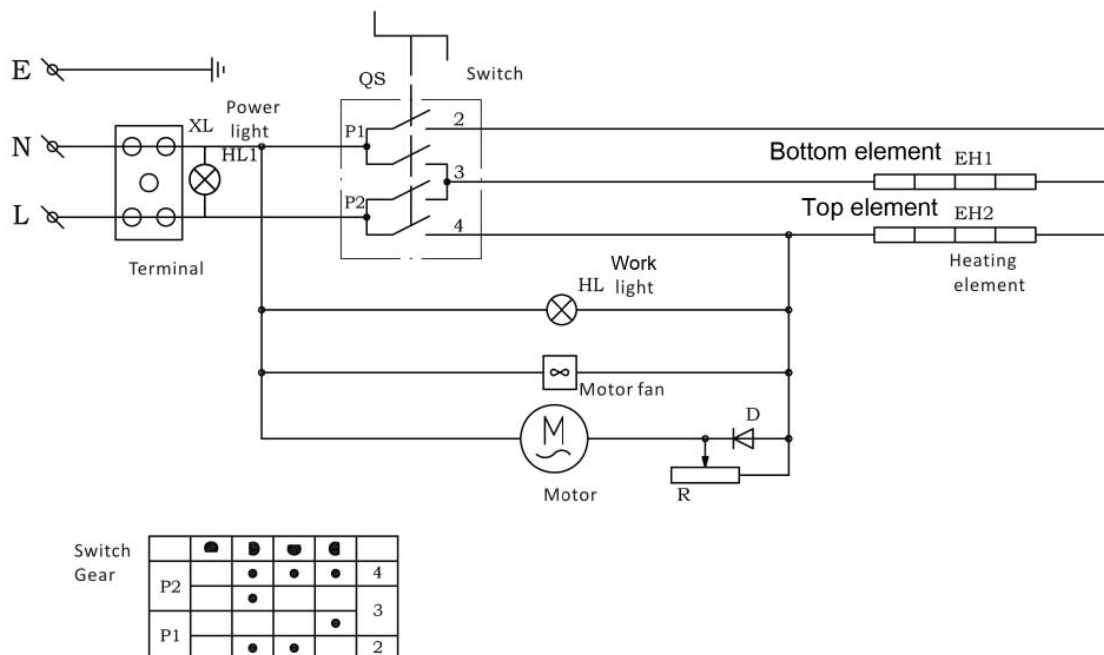
To go into a Power Save Mode, turn the rotary selector to Power Save Mode. The toaster is operating at 25% power. (Note: To place toaster back into full operation turn the selector back into TOAST. Unit is back up to full power within 5 minutes.)

CLEANING – NOTE: To maintain cleanliness and increase service life, the oven should be cleaned daily. Do not immerse the unit in water or any other liquid. If liquid enters the electrical compartment it may cause a short circuit or electrical shock.

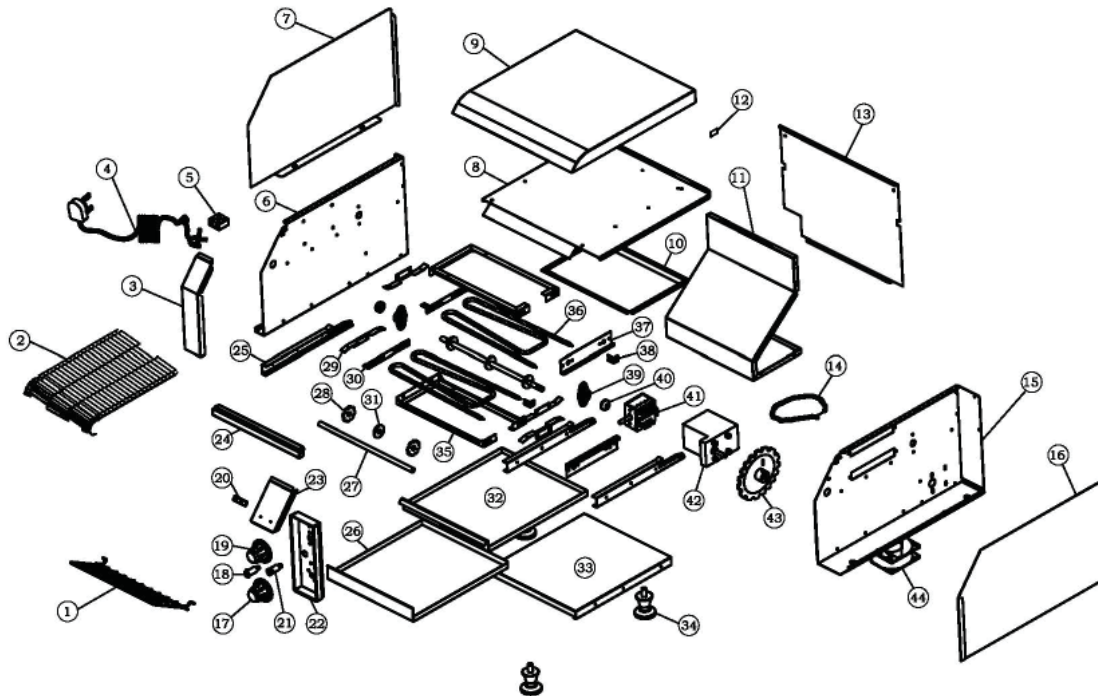
- Disconnect the power cord from the electrical outlet and allow unit to cool down
- To clean the exterior, wipe down with a damp cloth
- Make sure the toaster surface is completely dry before attempting to use again
- To clean the crumb tray, carefully slide the crumb tray out and dispose of any crumbs
- To clean the toast feed ramp, press in the two wire spokes and remove the guide from the unit
- Wipe clean with a soft, damp cloth and re-install by aligning wire spokes with holes in toaster
- To avoid damage, do not use abrasive cleaners or scouring pads
- If soap or chemical cleaners are used, be sure they are completely rinsed away with clear water immediately after cleaning. Chemical residue could damage or corrode the surfaces of the unit.

Wiring Diagram for the Conveyor Toaster

1700W/120VAC/60Hz



Parts Diagram and Replacement Parts for the Conveyor Toaster



Ref. No.	Part Number	Description	QTY
1	CVYT-1	Guide Rack	1
2	CVYT-2	Belt	1
3		Decorate Plate Left	1
4	CVYT-4	Power Cord	1
5	CVYT-5	Terminal	1
6		Inner Plate Left	1
7		Side Plate Left	1
8		Top Plate for Inner Chamber	1
9		Top Cover Plate	1
10		Heat Insulation Plate	1
11		Fan Support Plate	1
12		Welding Clip	2
13		Rear Plate	1
14	CVYT-14	Chain	1
15		Inner Plate Right	1
16		Side Plate Right	1
17	CVYT-17	Knob/Gear	1
18	CVYT-18	Indicator Light - Green	1
19	CVYT-19	Knob/Speed	1
20		Adcraft Logo	1
21	CVYT-21	Indicator Light - Orange	1
22		Control Plate	1
23		Decorate Plate Right	1

Replacement Parts for the Conveyor Toaster

Ref. No.	Part Number	Description	QTY
24		Front Support	1
25		Top Slideway	2
26	CVYT-26	Bottom Crumb Tray	1
27		Transmission Shaft	2
28		Wheel with Gear	2
29		Heating Element Rear Baffle	4
30		Heating Element Support Plate	2
31		Wheel without gear	4
32	CVYT-32	Top Crumb Tray	1
33		Bottom Slideway	1
34	CVYT-34	Foot	4
35		Heating Element Support	2
36	CVYT-36	Heating Element	2
37		Heating Element Baffle	2
38		Heating Element Support Rack	2
39		Shaft Jacket Support Rack	4
40		Shaft Jacket	4
41	CVYT-41	Switch	1
42	CYT120-20	Motor for Conveyor Toasters	1
43		Wheel for Motor Chain	1
44	CYT-FAN	Fan for Conveyor Toasters	1

One Year Limited Warranty

Patriot warrants its equipment against defects in materials and workmanship, subject to the following conditions:

Patriot is warranted for one year, effective from the date of purchase by the original owner. A copy of the original receipt or other proof of purchase is required to obtain warranty coverage. This warranty applies to the original owner only, and is not assignable.

Should any product fail to function in its intended manner under normal use within the limits defined in this warranty, at Patriot's discretion, such product will be repaired, replaced with a refurbished unit, or replaced with a new unit by Patriot, after defective unit has been inspected and defect has been confirmed. Patriot does not assume any liability for extended delays in replacing any item beyond its control. This warranty does not apply to rubber and non-metallic synthetic parts that may need to be replaced due to normal usage, wear or lack of preventative maintenance.

This warranty covers products shipped into the 48 contiguous United States, Hawaii, and metropolitan areas of Alaska and Canada. Warranty coverage on products used outside the 48 contiguous United States, Hawaii and metropolitan areas of Alaska and Canada may vary.

The following conditions are not covered by warranty:

- Equipment failure relating to improper installation, improper utility connection or supply and problems due to improper ventilation.
- Equipment that has not properly been maintained, damage from improper cleaning, and water damage to controls.
- Equipment that has not been used in an appropriate manner, or has been subject to misuse, neglect, abuse, accident, alteration, negligence, damage during transit, delivery or installation, fire, flood, riot, or act of God.
- Equipment that has the model number or serial number removed or altered.
- Equipment on which the security seal has been broken.

If the equipment has been changed, altered, modified, or repaired without express written permission from Patriot, then the manufacturer shall not be liable for any damages to any person or to any property, which may result from the use of this equipment thereafter.

This equipment is intended for commercial use only and this warranty is void if equipment is used in other than a commercial application.

For warranty and non-warranty related issues, technical support, purchase replacement parts and warranty registration visit www.admiralcraft.com or call 1-800-223-7750 for technical support. Please have your model number, serial number and proof of purchase ready. It is not necessary to contact the place where you originally purchased your product from.

“THE FOREGOING WARRANTY IS IN LIEU OF ANY AND ALL WARRANTIES EXPRESSED OR IMPLIED INCLUDING ANY IMPLIED WARRANTY OF MERCHANTABILITY OR FITNESS FOR PARTICULAR PURPOSES AND CONSTITUTES THE ENTIRE LIABILITY OF ACE. IN NO EVENT DOES THE LIMITED WARRANTY EXTEND BEYOND THE TERMS STATED HEREIN.”