



UCGo60A

Features and Benefits

- Produces clear, long-lasting gourmet cubes.
- Space-saving 15 1/4 in. (387 mm) wide under-counter design.
- Produces up to 69 lbs. (31 kg) of ice per day.
- Constructed from sturdy, corrosion-resistant stainless steel and fingerprint-proof plastic.
- Ideal for any under-counter or bar application.
- Contemporary, elegant design.
- Environmentally friendly R290A refrigerant.

Space-Saving Solutions

- Front air discharge design for compact spaces.
- Low profile top saves counter space.
- Stores up to 17 1/2 lbs. (8 kg) of ice.
- Easy front access to ice.
- Removable Air Filter.

Options & Accessories

WATER FILTERS			
Ice Machine Model	Manifold		Inline
	System	Replacement	System
UCGo60A	IFQ-1S	IOMQ-S	IFI4C / IFI8C

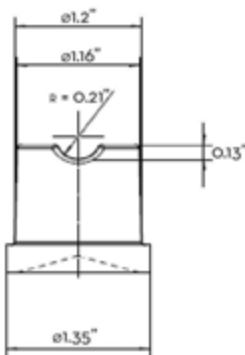
Ice Maker Warranty

Every UCG Ice-O-Matic ice maker is backed by a warranty that provides both parts and labor coverage.

- Three years parts and labor.

Ice Form

GOURMET	
Height	1 1/4" (30.5mm)
Diameter	1 1/4" (34.5mm)

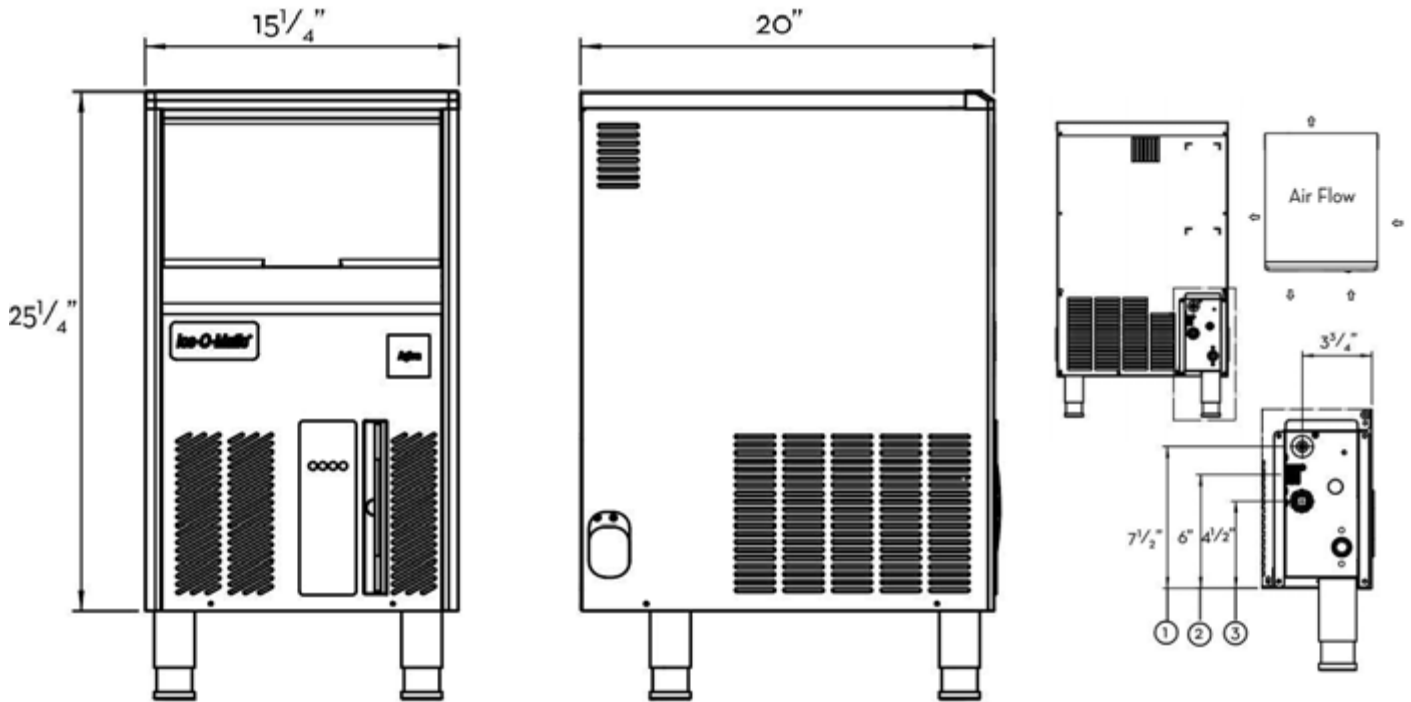




UCGo6oA GOURMET SERIES UNDERCOUNTER

Ice-O-Matic
Ice. Pure and Simple

UCGo6oA GOURMET SERIES UNDERCOUNTER



- 1 - Power Cord
- 2 - 3/4" Water Inlet
- 3 - 25/32" Water Drain

Operating Requirements

	MINIMUM	MAXIMUM
	60 Hz	
Ambient Temp. Range Air	50°F(10°C)	109°F(43°C)
Water Temp.	41°F(5°C)	100°F(38°C)
Water Pressure	14psi(1 Bar)	70psi(5 Bar)
Electrical Voltage	115V/60Hz/1ph	

Dimensions

ALL MODELS	
W x D x H (mm)	387 x 510 x 641
W x D x H (in.)	15 1/4 x 20 x 25 1/4

*Dimensions do not account for the included adjustable legs.

Specifications

Model Number	Cond. Unit	Ice Production per 24 hrs air/water 90/70 (kg)/(lbs)	Storage Capacity (kg)/(lbs)	Water Consumption (gph)	kWH Used per 100 lbs of ice @ 90°F air/70°F water	Voltage Characteristics
UCGo6oA	Air	19.5/42	8/17.5	0.7 gph	17.8	115/60/1

NOTES:
Approx. Shipping Weight lbs(kg): 81.5(37)
Refrigerant Type: R290A
All specifications and performance data are subject to normal manufacturing variances.