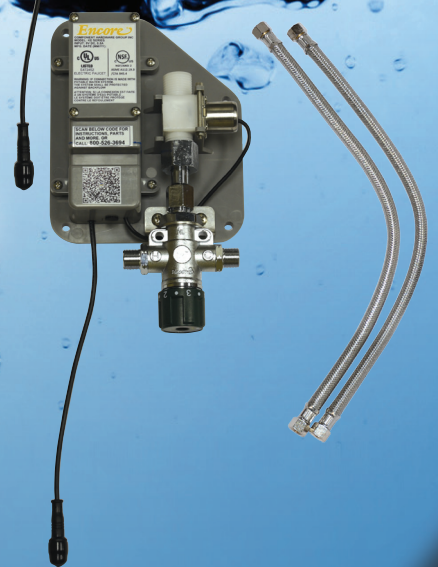




## Conserve Water and Save Energy While Reducing the Chance of Cross Contamination

### Introducing The Encore® Intelli-Flo™ EZ-Electronic™ Hand Wash Station without Side Splashes

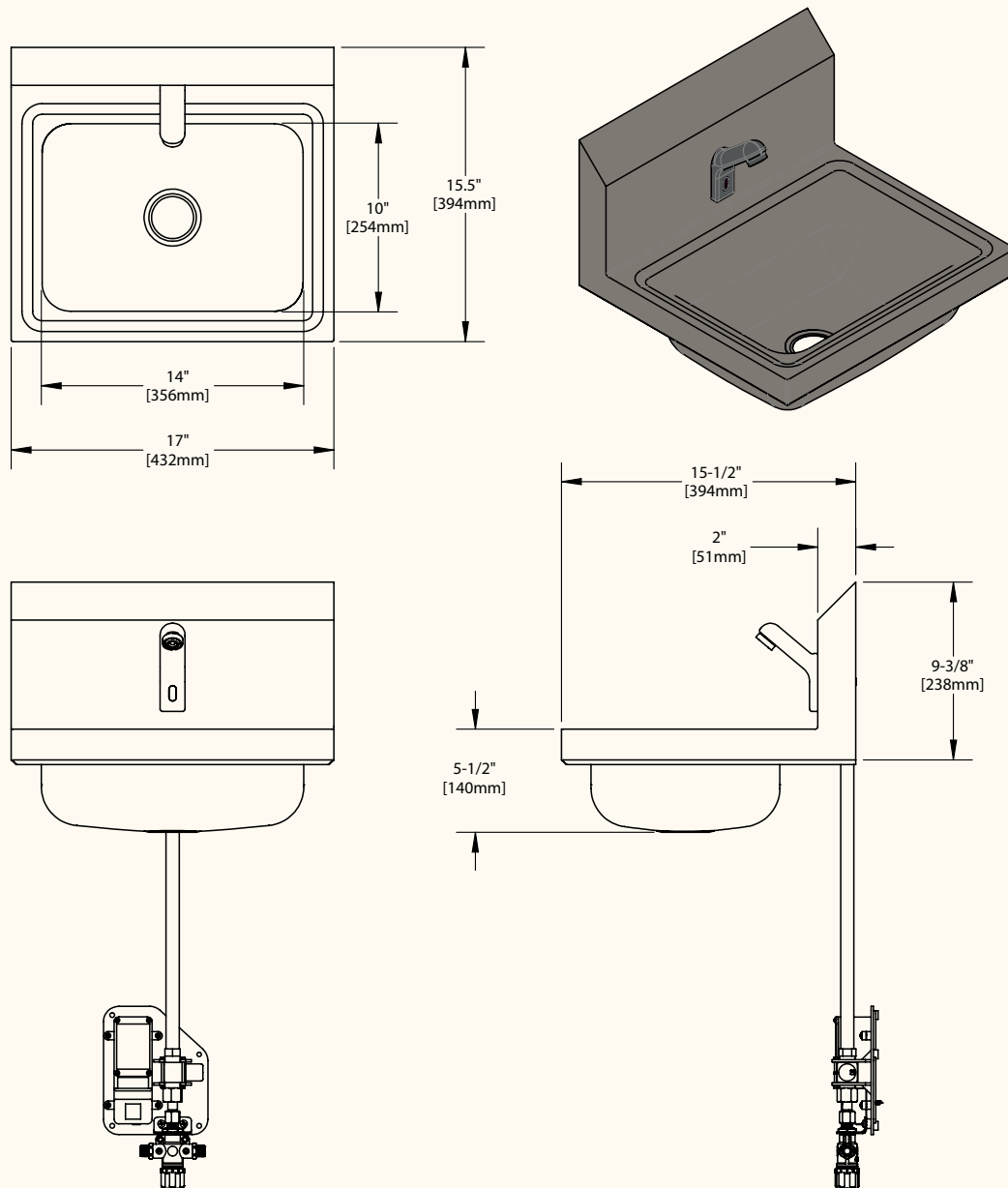
- Compact pre-assembled control housing reduces installation time
- Complete sink in a box with pre-assembled spout
- Everything needed to install is included in the box
- Pays for itself in five months
- One-piece welded design makes cleaning easier
- Industry best- 500,000 cycle battery life (250,000 hand washes)
- Energy-efficient "latching" (bi-stable) solenoid only uses power to open and close
- Active infrared, no hunting for "hot spot"
- Optimized sensor angle keeps water flow on hands, less splash
- Reduces water consumption by 70%
- 20 second adjustable automatic time-out feature (complies with FDA Food Code)



**Encore®**  
PREMIUM PLUMBING PRODUCTS

1890 Swarthmore Avenue, PO Box 2020, Lakewood, NJ 08701  
Tel. 800-526-3694 • 732-363-4700 • Fax 732-364-8110 • [www.encoreplumbing.com](http://www.encoreplumbing.com)

# Encore® Technical Specifications for KE23/24/25 Series



**COMPLIES WITH:**  
THE FEDERAL "REDUCTION OF LEAD  
IN DRINKING WATER ACT" –  
2011 – US SENATE BILL NO. S.3874  
NSF/ANSI 61/9, ANNEX G



"Y" Inlet Supply	Manual Mixing Valve	Thermostatic Mixing Valve	Power	Aerator
KE23-B031-CA1	KE24-B031-CA1	KE25-B031-CA1	Battery	0.5GPM PCA Spray, Vandal Resistant
KE23-B131-CA1	KE24-B131-CA1	KE25-B131-CA1	AC/DC*	
KE23-B031-CB1	KE24-B031-CB1	KE25-B031-CB1	Battery	1.5GPM Laminar Flow, Antimicrobial and Vandal Resistant
KE23-B131-CB1	KE24-B131-CB1	KE25-B131-CB1	AC/DC*	

\*Includes 9V 800 mA UL listed adapter, US plug.

(2) 18" braided stainless steel supply lines included  
DC models powered with (4) 1.5V AA batteries (included)

3/8" Compression fitting  
Operating Temperature: 68 - 120°F  
Operating Pressure: 15 - 125psi

**PROJECT NAME:** \_\_\_\_\_

**LOCATION:** \_\_\_\_\_

**SPECIFIER ITEM NO.** \_\_\_\_\_ **QTY:** \_\_\_\_\_

**ENCORE PART NO.** \_\_\_\_\_

Encore<sup>®</sup> Intelli-Flo<sup>™</sup> EZ-Electronic<sup>™</sup> Wash  
Station with Thermostatic Mixing Valve

**KE25-Bx31-Cx1 Series**



  
**Intelli-Flo**

Stainless steel handsink with built-in hands free electronic faucet designed to minimize water consumption and reduce potential for cross contamination.

**Commercial Quality Features**

- Pre-assembled control housing reduces installation time
- 500,000 cycle battery life (250,000 hand washes)
- Low lead compliant stainless steel spout with vandal resistant aerator
- Energy-efficient "latching" (bi-stable) solenoid only uses power to open or close
- Auto-ranging feature automatically adjusts sensing range
- (2) 18" braided stainless steel supply lines included
- Thermostatic mixing valve with integral hot and cold check valves and cleanable filter
- DC models powered with (4) 1.5V AA batteries (included)

**Hands-Free Operation**

- Infrared sensor activated
- Self-adapting sensor distance adjustment
- 1 second shut-off delay
- 20 second adjustable automatic time-out feature (complies with FDA Food Code)
- Adjustable range of action

**SPECIFICATIONS:**

Stainless steel handsink with integral outlet faucet to be Encore KE25 Series\* in the following configuration:

\_\_\_\_ KE25-B031-CA1      \_\_\_\_ KE25-B031-CB1  
\_\_\_\_ KE25-B131-CA1      \_\_\_\_ KE25-B131-CB1

Stainless steel wall mount handsink to have Type 304 one piece welded construction. Sink bowl accepts 1-1/2" NPS stainless steel mini-basket drain (included). Handsink to be wall mounted by using a 'Z' clip wall bracket (provided) and shall have a recessed countertop to create a 'no-drip' edge or 'marine' edge.

Faucet spout to be constructed of chrome plated brass with a total lead content of less than 0.25% by weighted average. Thermostatic mixing valve standard with integral cleanable filter. Sensor assembly to include 6V DC bi-stable solenoid powered by four (4) 1.5V AA batteries (included). AC models to include 9V 800 mA UL listed adapter, US plug. Valve components (battery compartment, sensor connector, and control module (PCB)) to be housed in sealed, non-metallic box for easy access and quick installation. Faucet to be furnished with (2) 3/8" braided stainless steel supply lines.

\*Refer to model number configurator chart on reverse.

Approximate shipping weight - 10 lbs  
Warranty - 3 years parts

**COMPLIES WITH:**  
THE FEDERAL "REDUCTION OF LEAD  
IN DRINKING WATER ACT" -  
2011 - US SENATE BILL NO. S.3874  
NSF/ANSI 61/9, ANNEX G

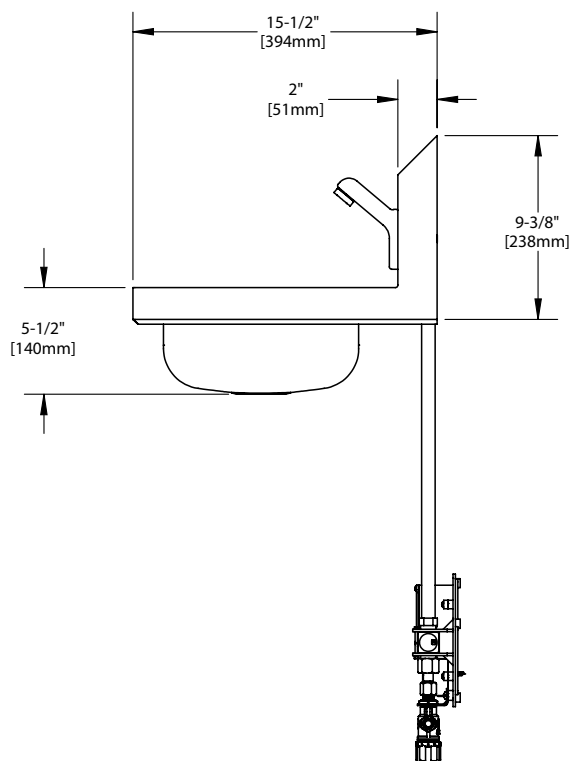
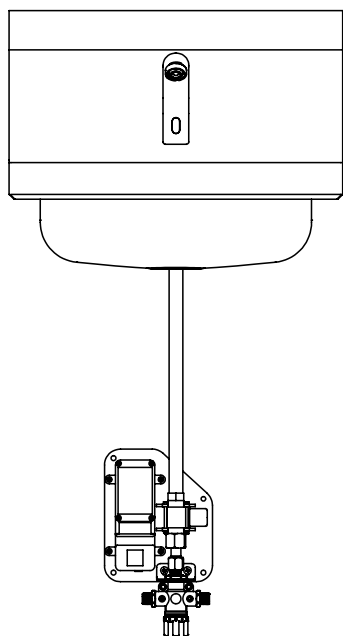
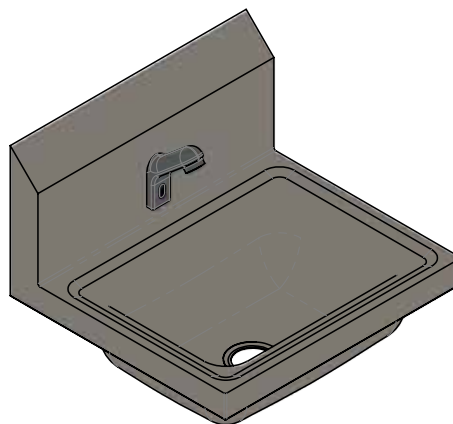
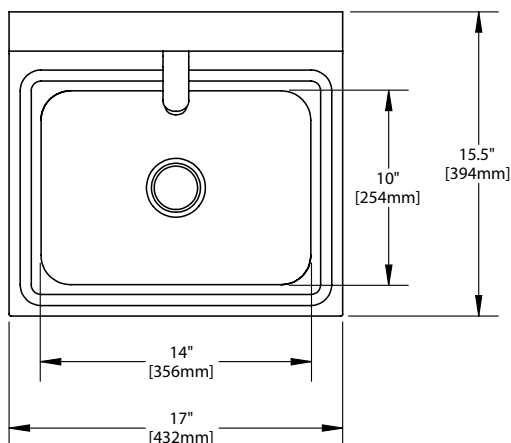


# KE25-Bx31-Cx1 Series

## Intelli-Flo EZ-Electronic Wash Station with Thermostatic Mixing Valve

PREMIUM PLUMBING PRODUCTS  
**Encore®**

1890 Swarthmore Avenue, PO Box 2020, Lakewood, NJ 08701  
Phone: 800-526-3694, 732-363-4700, Fax: 732-364-8110  
[www.encoreplumbing.com](http://www.encoreplumbing.com)



Model No.	Description
KE25-B031-CA1	Battery Power, .5GPM PCA Spray, Vandal Resistant
KE25-B131-CA1	AC/DC* Power, .5GPM PCA Spray, Vandal Resistant
KE25-B031-CB1	Battery Power, 1.5GPM Laminar Flow, Antimicrobial and Vandal Resistant
KE25-B131-CB1	AC/DC* Power, 1.5GPM Laminar Flow, Antimicrobial and Vandal Resistant

*Dimensions shown in inches (mm) are for reference only and are subject to change.*

### NOTE:

\*Includes 9V 800 mA UL listed adapter, US plug.

(2) 18" braided stainless steel supply lines included  
DC models powered with (4) 1.5V AA batteries (included)

3/8" Compression fitting  
Operating Temperature: 68 - 120°F  
Operating Pressure: 15 - 125psi