



# BEVERAGE-AIR®

Project: \_\_\_\_\_  
Item: \_\_\_\_\_  
Location: \_\_\_\_\_  
Approved: \_\_\_\_\_

AIA#

SIS#

## HORIZONTAL BOTTLE COOLERS

**MODELS:**  
**DW49HC-B**

DW49HC Deep Well Series  
Hydrocarbon Series



**3 Year Parts/Labor Warranty**  
**Additional 4 Year Compressor Warranty**

### CABINET CONSTRUCTION

- Exterior construction includes wear-resistant vinyl on steel in black finish
- Interior is galvanized with stainless steel floor
- Full electronic control
- Tops include easy glide, stainless steel lids and stainless steel counter top
- Countertop with integral glass stops
- Three (3) Epoxy coated adjustable wire dividers
- Bottle cap & cap catcher standard
- Constructed with high cooling RPM fans to provide fast cooling

### OPTIONS & ACCESSORIES

- Stainless steel exterior
- Stainless steel interior
- Wire divider
- Lid locks
- 3" casters or 6" adjustable leg with plate
- Remote option\* (see note on back on page)

### REFRIGERATION SYSTEM

- Refrigeration system uses R290 refrigerant to comply with all environmental concerns
- Automatic, non-electric defrost
- Epoxy coated evaporator coil
- Forced air refrigeration system holds product between 36° - 40°F

**DW49HC Deep Well Series: Horizontal Bottle Cooler**



Please verify qualifying units by visiting:  
[www.energystar.gov/cfs](http://www.energystar.gov/cfs)

3779 Champion Blvd., Winston-Salem, NC 27105  
1-888-845-9800 Fax: 1-336-245-6453  
Beverage-Air.com Sales@bevair.com



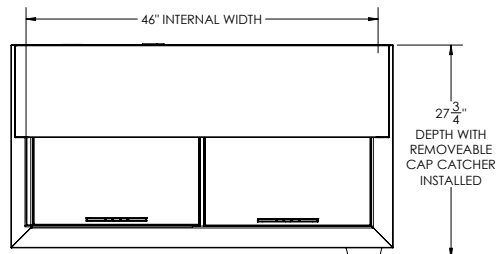
# BEVERAGE-AIR

MODEL	DW49HC-B
<b>EXTERNAL DIMENSIONAL DATA</b>	
Width Overall	50"
Depth Overall	26 1/2"
Depth Overall with Cap Catcher	27 3/4"
Height Overall	33 3/4"
Number of Lids	2
<b>INTERNAL DIMENSIONAL DATA</b>	
NET Capacity (cubic ft.)	13.7
Internal Width Overall (in)	46"
Internal Depth Overall (in)	22 3/4"
Internal Height Overall at Step (in)	15 1/2"
Internal Height Overall (in)	26 3/4"
Number of Dividers	3
12 oz. Bottle Capacity	17 1/2 Cases
12 oz. Can Capacity	23 3/4 Cases
<b>ELECTRICAL DATA</b>	
Full Load Amperes	2.5
<b>REFRIGERATION DATA</b>	
Horsepower*	1/4
Capacity (BTU/Hr)*	1702
<b>SHIPPING DATA</b>	
Gross Weight - Crated	266 lbs
Height - Crated	40"
Width - Crated	53"
Depth - Crated	30"

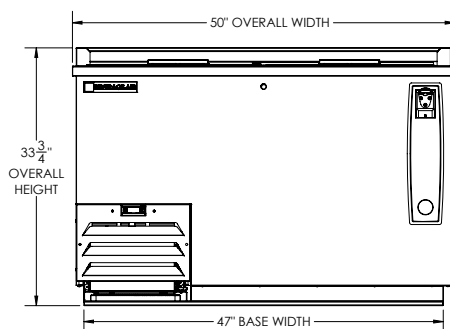
\*NOTE: Remote units are field wired and come with 6" legs.  
Refrigerant must be specified at time of order.

## Horizontal Bottle Coolers-Deep Well Models: DW49HC-B

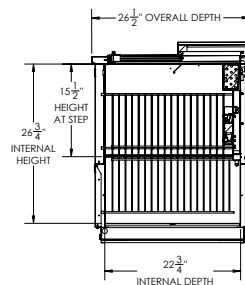
### Model Views



### PLAN VIEW



### ELEVATION VIEW



### SIDE VIEW



### \*ELECTRICAL CONNECTION



115/60/1  
NEMA 5-15P

Units pre-wired at factory  
and include 8' long cord  
and plug set.

3779 Champion Blvd., Winston-Salem, NC 27105 1-888-845-9800 Fax: 1-336-245-6453 Beverage-Air.com Sales@bevair.com

an Ali Group Company



The Spirit of Excellence