



# BEVERAGE-AIR®

Project: \_\_\_\_\_

AIA#

Item: \_\_\_\_\_

Location: \_\_\_\_\_

SIS#

Approved: \_\_\_\_\_

## HORIZONTAL BOTTLE COOLERS

**MODELS:**  
**DW94HC-B**

DW94HC Deep Well Series  
Hydrocarbon Series

**DW94HC Deep Well Series: Horizontal Bottle Cooler**



**3 Year Parts/Labor Warranty**  
**Additional 4 Year Compressor Warranty**

### CABINET CONSTRUCTION

- Exterior construction includes wear-resistant vinyl on steel in black finish
- Interior is galvanized with stainless steel floor
- Full electronic control
- Tops include easy glide, stainless steel lids and stainless steel counter top
- Countertop with integral glass stops
- Three (3) Epoxy coated adjustable wire dividers
- Bottle cap & cap catcher standard
- Constructed with high cooling RPM fans to provide fast cooling

### OPTIONS & ACCESSORIES

- Stainless steel exterior
- Stainless steel interior
- Wire divider
- Lid locks
- 3" casters or 6" adjustable leg with plate
- Remote option\* (see note on back on page)

### REFRIGERATION SYSTEM

- Refrigeration system uses R290 refrigerant to comply with all environmental concerns
- Automatic, non-electric defrost
- Epoxy coated evaporator coil
- Forced air refrigeration system holds product between 36° - 40°F



Please verify qualifying units by visiting:  
[www.energystar.gov/cfs](http://www.energystar.gov/cfs)

3779 Champion Blvd., Winston-Salem, NC 27105  
1-888-845-9800 Fax: 1-336-245-6453  
Beverage-Air.com Sales@bevair.com



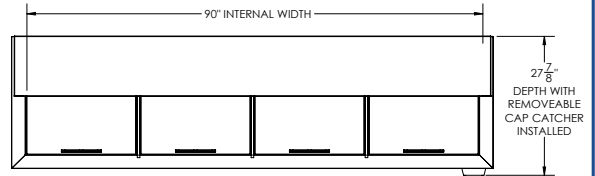
# BEVERAGE-AIR®

MODEL	DW94HC-B
EXTERNAL DIMENSIONAL DATA	
Width Overall	95"
Depth Overall	26 <sup>5</sup> / <sub>8</sub> "
Depth Overall with Cap Catcher	27 <sup>7</sup> / <sub>8</sub> "
Height Overall	33 <sup>3</sup> / <sub>4</sub> "
Number of Lids	4
INTERNAL DIMENSIONAL DATA	
NET Capacity (cubic ft.)	28.63
Internal Width Overall (in)	91
Internal Depth Overall (in)	22 <sup>3</sup> / <sub>4</sub> "
Internal Height Overall at Step (in)	16 <sup>3</sup> / <sub>4</sub> "
Internal Height Overall (in)	26 <sup>3</sup> / <sub>4</sub> "
Number of Dividers	6
12 oz. Bottle Capacity	39 Cases
12 oz. Can Capacity	55 <sup>3</sup> / <sub>4</sub> Cases
ELECTRICAL DATA	
Full Load Amperes	2.5
REFRIGERATION DATA	
Horsepower*	1/4
Capacity (BTU/Hr)*	1702
SHIPPING DATA	
Gross Weight - Crated	468 lbs
Height - Crated	41"
Width - Crated	98"
Depth - Crated	29"

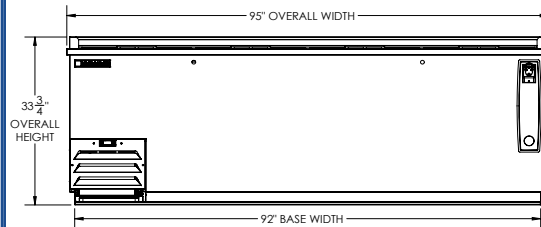
\*NOTE: Remote units are field wired and come with 6" legs.  
Refrigerant must be specified at time of order.

## Horizontal Bottle Coolers-Deep Well Models: DW94HC-B

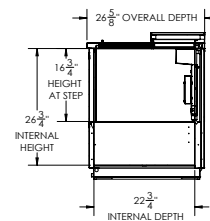
### Model Views



### PLAN VIEW



### ELEVATION VIEW



### SIDE VIEW



### \*ELECTRICAL CONNECTION



115/60/1  
NEMA 5-15P

Units pre-wired at factory  
and include 8' long cord  
and plug set.

3779 Champion Blvd., Winston-Salem, NC 27105 1-888-845-9800 Fax: 1-336-245-6453 Beverage-Air.com Sales@bevaair.com

an Ali Group Company

