



# BEVERAGE-AIR

Project: _____	AIA# _____
Item: _____	
Location: _____	SIS# _____
Approved: _____	

## BB BAR EQUIPMENT - BACK BAR REFRIGERATOR

BB78HC Glass Door Food Rated  
Hydrocarbon Series

MODEL:  
BB78HC-1-FG-B  
BB78HC-1-FG-S

BB78HC Back Bar Refrigerators: Glass Door Series



**BB78HC-1-FG-B**  
(Black model shown)

### OPTIONS & ACCESSORIES

- ☐ Wine model (40°-60° models)
- ☐ Wine shelf divider
- ☐ Underbar models available
- ☐ Additional shelves
- ☐ Additional shelf clips
- ☐ 3" or 6" casters
- ☐ 6" Black legs
- ☐ Remote option  
(Refrigerant must be specified at time of order, see note on back on page)

**3 Year Parts/Labor Warranty**  
**Additional 4 Year Compressor Warranty**

### CABINET CONSTRUCTION

- Exterior black or stainless steel front and door, gray painted sides
- Stainless steel interior
- Full electronic control
- Stainless steel top
- Two (2) epoxy coated shelves per section, standard
- Self-closing doors
- Stay-open feature & lock standard
- Magnetic door gaskets provide positive door sealing
- Field reversible door
- LED lighting
- Certified for open food product
- Compressor available on left or right, specify at time of unit order
- Balanced, forced air refrigeration system provides rapid chilling of product
- Maintains product temperature between 36°F and 38°F

### REFRIGERATION SYSTEM

- Refrigeration system uses R290 refrigerant to comply with all environmental concerns
- Automatic, non-electric defrost
- Epoxy coated evaporator coil



3779 Champion Blvd., Winston-Salem, NC 27105  
1-888-845-9800 Fax: 1-336-245-6453  
Beverage-Air.com Sales@bevair.com



# BEVERAGE-AIR

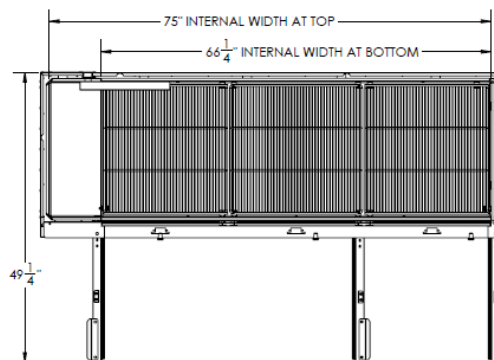
MODEL	BB78HC-1-FG-B	BB78HC-1-FG-S
<b>EXTERNAL DIMENSIONAL DATA</b>		
Width Overall	79"	79"
Depth Overall	29 1/8"	29 1/8"
Height Overall	37 1/4"	37 1/4"
Number of Doors	3	3
Depth with Doors Open 90°	49 1/4"	49 1/4"
Doors Opening (in)	19 7/8" x 30"	19 7/8" x 30"
<b>INTERNAL DIMENSIONAL DATA</b>		
NET Capacity (cubic ft.)	33.59	33.59
Internal Width Overall (in)	66 1/4"	66 1/4"
Internal Depth Overall (in)	23"	23"
Internal Height Overall (in)	32 1/8"	32 1/8"
Number of Shelves	6	6
Number of Kegs	4	4
<b>ELECTRICAL DATA</b>		
Full Load Amperes* 115/60/1	5.5	5.5
<b>REFRIGERATION DATA</b>		
Horsepower*	1/3	1/3
Capacity (BTU/Hr)*	2392	2392
<b>WEIGHT DATA</b>		
Gross Weight (Crated lbs)	444 lbs	476 lbs
Height - Crated	41 1/4"	41 1/4"
Width - Crated	82"	82"
Depth - Crated	32 1/4"	32 1/4"

\*NOTE: Remote units are field wired and comes with 6" legs. Refrigerant must be specified at time of order.

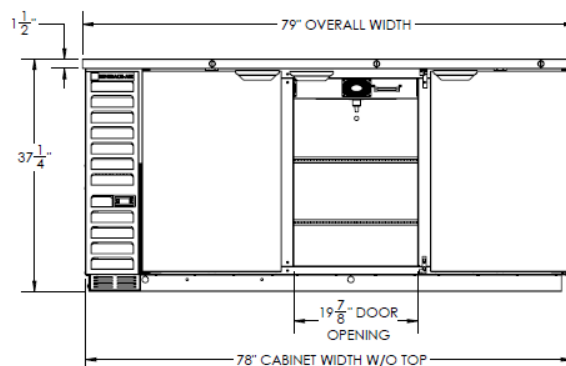
## Bar Equipment-Back Bar Refrigerator Glass Door Food Rated

Model: BB78HC-1-FG-B, BB78HC-1-FG-B

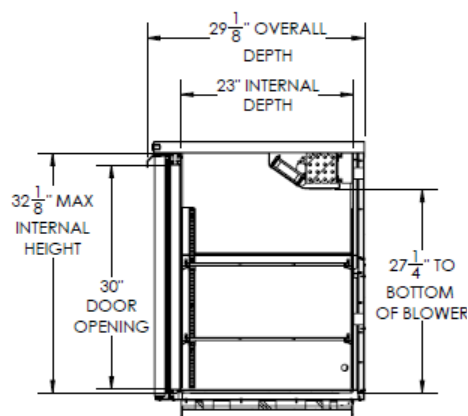
### Model Views



Plan View



Elevation View



Side View

### ELECTRICAL CONNECTION

Units pre-wired at factory and include 8' long cord and plug set.



115/60/1  
NEMA-5-15P



an Ali Group Company



3779 Champion Blvd., Winston-Salem, NC 27105  
1-888-845-9800 Fax: 1-336-245-6453  
Beverage-Air.com sales@bevair.com