



BEVERAGE-AIR

| | |
|-----------------|------------|
| Project: _____ | AIA# _____ |
| Item: _____ | |
| Location: _____ | SIS# _____ |
| Approved: _____ | |

BB BAR EQUIPMENT - BACK BAR REFRIGERATOR

BB94HC Solid Door
Hydrocarbon Series

MODEL:
BB94HC-1-B
BB94HC-1-S



BB94HC-1-B

OPTIONS & ACCESSORIES

- ☐ For Stainless steel interior (refer to -F models)
- ☐ Wine model (40°-60° models)
- ☐ Wine shelf divider
- ☐ Food rated models available
- ☐ Additional shelves
- ☐ Additional shelf clips
- ☐ 3" or 6" casters
- ☐ 6" Black legs
- ☐ Remote option (Refrigerant must be specified at time of order, see note on back on page)

3 Year Parts/Labor Warranty
Additional 4 Year Compressor Warranty

CABINET CONSTRUCTION

- Exterior black or stainless steel front and door, gray painted sides
- Interior construction utilizes galvanized steel on walls and ceiling, heavy duty stainless steel floor
- Full electronic control
- Stainless steel top
- Two (2) epoxy coated shelves per section, standard
- Self-closing doors
- Stay-open feature & lock standard
- Magnetic door gaskets provide positive door sealing
- Field reversible door
- LED lighting
- Packaged products only
- Compressor available on left or right, specify at time of unit order
- Balanced, forced air refrigeration system provides rapid chilling of product
- Maintains product temperature between 36°F and 38°F

REFRIGERATION SYSTEM

- Refrigeration system uses R290 refrigerant to comply with all environmental concerns
- Automatic, non-electric defrost
- Epoxy coated evaporator coil

BB94HC Back Bar Refrigerators: Solid Door Model



3779 Champion Blvd., Winston-Salem, NC 27105
1-888-845-9800 Fax: 1-336-245-6453
Beverage-Air.com Sales@bevair.com



BEVERAGE-AIR

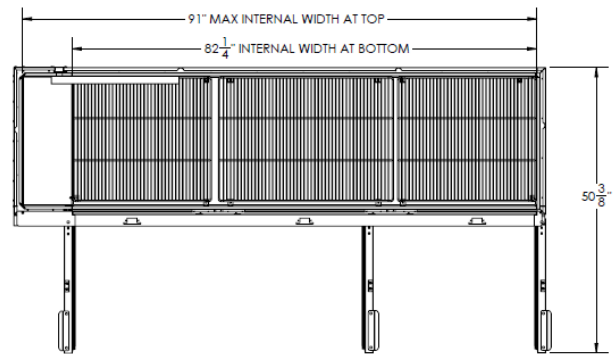
| MODEL | BB94HC-1-B | BB94HC-1-S |
|----------------------------------|------------|------------|
| EXTERNAL DIMENSIONAL DATA | | |
| Width Overall | 95" | 95" |
| Depth Overall with Handles | 29 1/8" | 29 1/8" |
| Height Overall | 37 1/4" | 37 1/4" |
| Number of Doors | 3 | 3 |
| Depth with Door Open 90° | 50 3/8" | 50 3/8" |
| Door Opening (in) | 21" x 30" | 21" x 30" |
| INTERNAL DIMENSIONAL DATA | | |
| NET Capacity (cubic ft.) | 37.82 | 37.82 |
| Internal Width Overall (in) | 82 1/4" | 82 1/4" |
| Internal Depth Overall (in) | 23" | 23" |
| Internal Height Overall (in) | 32" | 32" |
| Number of Shelves | 6 | 6 |
| Number of Kegs | 5 | 5 |
| ELECTRICAL DATA | | |
| Full Load Amperes* 115/60/1 | 5.5 | 5.5 |
| REFRIGERATION DATA | | |
| Horsepower* | 1/3 | 1/3 |
| Capacity (BTU/Hr)* | 2392 | 2392 |
| WEIGHT DATA | | |
| Gross Weight (Crated lbs) | 494 lbs | 494 lbs |
| Height - Crated | 44 1/2" | 44 1/2" |
| Width - Crated | 97" | 97" |
| Depth - Crated | 31 1/2" | 31 1/2" |

*NOTE: Remote units are field wired and comes with 6" legs. Refrigerant must be specified at time of order.

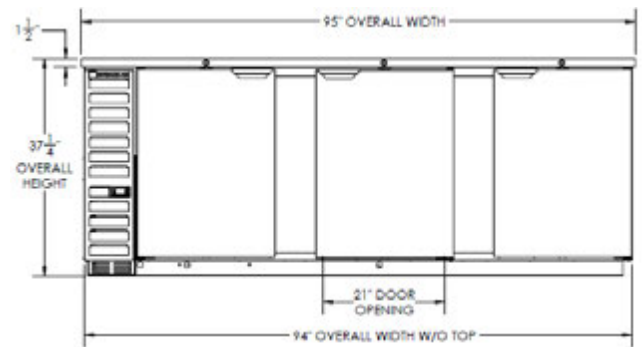
Bar Equipment-Back Bar Refrigerator Solid Door

Model: BB94HC-1-B, BB94HC-1-S

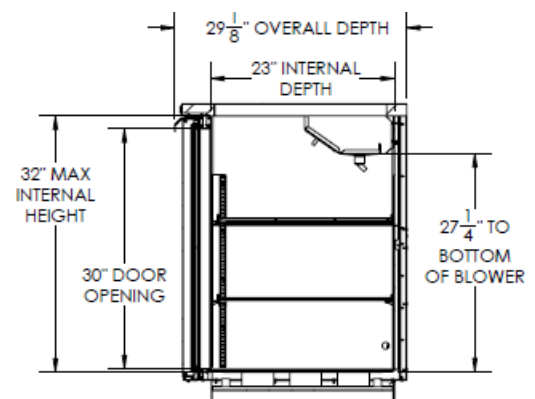
Model Views



Plan View



Elevation View



Side View

ELECTRICAL CONNECTION

Units pre-wired at factory and include 8' long cord and plug set.



115/60/1
NEMA-5-15P



an Ali Group Company



The Spirit of Excellence

3779 Champion Blvd., Winston-Salem, NC 27105
1-888-845-9800 Fax: 1-336-245-6453
Beverage-Air.com sales@bevair.com