



BEVERAGE-AIR®

Project: _____	AIA# _____
Item: _____	
Location: _____	SIS# _____
Approved: _____	

HBRF23HC BOTTOM MOUNT DUAL TEMPERATURE REFRIGERATOR/FREEZER

DUAL TEMPERATURE REFRIGERATOR/FREEZER

MODEL:
HBRF23HC-1-A

HBRF23HC Half-Solid Door Bottom Mount Reach-In
Hydrocarbon Series



3 Year Parts/Labor Warranty
Additional 4 Year Compressor Warranty

CABINET CONSTRUCTION

- Stainless steel exterior and interior
- Full electronic control with one-touch defrost
- Dual temp refrigerator/freezer units provide two different operating temperature zones for different types of products
- Refrigerator is top section
- Bottom freezer is section
- One-piece grille allows easy removal/installation for preventative maintenance
- Door locks standard
- Self closing door, 120° stay open feature with spring-loaded style hinges
- Snap-in magnetic door gaskets for easy cleaning and replacement
- Two (2) heavy-duty epoxy coated wire shelves per section
- LED lighting standard
- 6" Heavy-duty casters with (2) brakes
- Certified for open food product

OPTIONS & ACCESSORIES

- Epoxy shelves
- Shelf clips
- 3" Caster or 6" legs
- Wine temperature control
- Door swing orientation (at time of order)
- Remote option* (see note on back page)

REFRIGERATION SYSTEM

- Uses environmentally friendly, energy efficient R290 refrigerant, and meets all regulatory requirements for CARB, SNAP, DOE & more
- Adaptive defrost
- Epoxy coated evaporator coil
- Refrigerator maintains product temperatures between 36°F to 38°F
- Freezer maintains product temperature to -10°F




Please verify qualifying units by visiting:
www.energystar.gov/cfs

3779 Champion Blvd., Winston-Salem, NC 27105
1-888-845-9800 Fax: 1-336-245-6453
Beverage-Air.com Sales@bevair.com



BEVERAGE-AIR

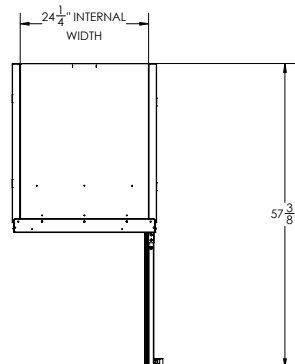
MODEL	HBRF23HC-1-A
EXTERNAL DIMENSIONAL DATA	
Width Overall	27 1/4"
Depth Overall (with handle)	33 3/4"
Height Overall (with casters)	84"
Number of Doors	2
Depth with Door Open 90°	57 3/8"
Door Openings (in)	24 1/8" x 24 5/8"
INTERNAL DIMENSIONAL DATA	
NET Capacity Refrigerator Top (cubic ft.)	8.65
NET Capacity Freezer Bottom (cubic ft.)	11.50
Internal Width Overall (in)	24 1/4"
Internal Depth Overall (in)	28 1/4"
Internal Height Top Usable (in)	26 7/8"
Internal Height Bottom Usable (in)	17 7/8"
ELECTRICAL DATA	
Full Load Amperes Refrigerator Top	2.0
Full Load Amperes Freezer Bottom	4.0
REFRIGERATION DATA	
Horsepower* Refrigerator Top	1/10
Horsepower* Freezer Bottom	1/2
Capacity (BTU/Hr)* Refrigerator Top	1110
Capacity (BTU/Hr)* Freezer Bottom	1513
SHIPPING DATA	
Gross Weight - Crated	446 lbs
Height - Crated	87"
Width - Crated	29"
Depth - Crated	38"

*NOTE: Remote units are field wired and come with 6" legs.
Refrigerant must be specified at time of order.

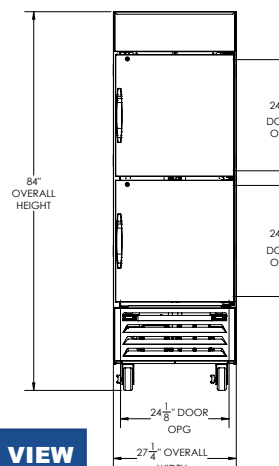
Dual Temp Bottom Mount Reach-In Half-Solid Door Refrigerator /Freezer Model: HBRF23HC-1-A

Model Views

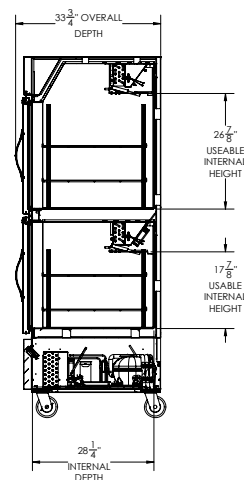
Required Clearance: Top 0", Bottom 3", Rear 3", Sides 0"



PLAN VIEW



ELEVATION VIEW



SIDE VIEW

*ELECTRICAL CONNECTION

115/60/1

(2) NEMA 5-15P



Units pre-wired at
factory and include 8'
long cord and plug set.



3779 Champion Blvd., Winston-Salem, NC 27105 1-888-845-9800 Fax: 1-336-245-6453 Beverage-Air.com Sales@bevair.com

an Ali Group Company



The Spirit of Excellence