



# BEVERAGE-AIR®

|                 |            |
|-----------------|------------|
| Project: _____  | AIA# _____ |
| Item: _____     |            |
| Location: _____ | SIS# _____ |
| Approved: _____ |            |

**SPED72HC SANDWICH PREP: STANDARD TOP SERIES**

## FOOD PREPARATION TABLES

**MODEL:  
SPED72HC-10-2**

**SPED72HC Sandwich Prep Table  
Hydrocarbon Series**



**3 Year Parts/Labor Warranty  
Additional 4 Year Compressor Warranty**

### CABINET CONSTRUCTION

- Stainless steel front, sides, top, door, drawer and grille (galvanized back & bottom)
- Interior liner is made of corrosion resistant aluminum
- Full electronic control
- Removable hoods made of matching stainless steel
- Airflow assures that product in open containers is kept below 41°F and above freezing
- Self-closing doors with 120° Stay-open feature, on cartridge style hinges
- Easy door removal for service and cleaning
- Field-reversible doors (hinge kit not included)
- Snap-In magnetic gaskets for positive door & drawer seal
- 10" Wide cutting board constructed of white polyethylene plastic
- Cutting board removable for cleaning
- Two epoxy-coated steel wire shelves per door section standard
- Ten (10) 1/6 4" deep pans constructed of polycarbonate plastic
- Pans furnished are 4" deep constructed of polycarbonate plastic
- Stainless steel drawer frames supported on telescoping drawer slides
- Drawer slides include locking mechanism that prevents drawers from being inadvertently pulled off cabinet
- 6" Casters, with (2) brakes standard

### OPTIONS & ACCESSORIES

- Stainless steel back
- Stainless steel interior
- Overshelves (single or double)
- Crumb catcher kit
- Richlite cutting board
- Night cover
- Bottle organizer
- Bun rack
- Epoxy coated shelves
- Shelf clips
- Shelf dividers
- Pan supports
- Pan support crossbar
- Pan configuration
- 6" legs or 3" casters
- Low profile casters
- Remote option\* (see note on back page)

### REFRIGERATION SYSTEM

- Uses environmentally friendly, energy efficient R290 refrigerant, and meets all regulatory requirements for CARB, SNAP, DOE & more
- Adaptive defrost
- Epoxy coated evaporator coil
- Enhanced airflow maintains temperatures between 36° - 38°F



Please verify qualifying units by visiting:  
[www.energystar.gov/cfs](http://www.energystar.gov/cfs)



3779 Champion Blvd., Winston-Salem, NC 27105  
1-888-845-9800 Fax: 1-336-245-6453  
Beverage-Air.com Sales@bevair.com



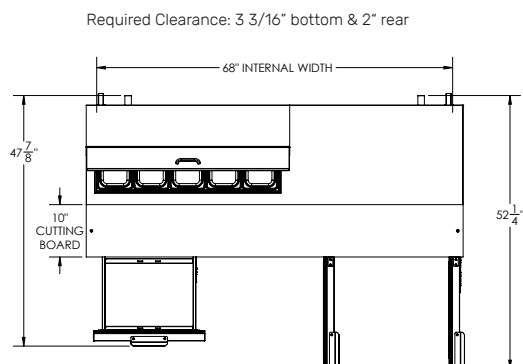
# BEVERAGE-AIR

| MODEL                            | SPED72HC-10-2                         |
|----------------------------------|---------------------------------------|
| <b>EXTERNAL DIMENSIONAL DATA</b> |                                       |
| Width Overall                    | 72"                                   |
| Depth Overall                    | 32"                                   |
| Height Overall with Casters      | 45 1/8"                               |
| Number Door                      | 2                                     |
| Depth with Door Open 90°         | 52 1/4"                               |
| Door Opening                     | 19 1/2" x 21 5/8"                     |
| Number Drawers                   | 2                                     |
| Depth with Drawer Open 90°       | 47 7/8"                               |
| Drawer Opening                   | 19 1/2" x 11 1/4"<br>19 1/2" x 7 1/2" |
| Width, Cutting Board             | 10"                                   |
| <b>INTERNAL DIMENSIONAL DATA</b> |                                       |
| NET Capacity (cubic ft.)         | 20.0                                  |
| Internal Width Overall (in)      | 68"                                   |
| Internal Depth Overall (in)      | 15 3/8"                               |
| Internal Height Usable (in)      | 16"                                   |
| No. Of Shelves                   | 4                                     |
| No. of Pans                      | 10                                    |
| <b>ELECTRICAL DATA</b>           |                                       |
| Full Load Amperes                | 5.4                                   |
| <b>REFRIGERATION DATA</b>        |                                       |
| Horsepower                       | 1/3                                   |
| Capacity (BTU/Hr)                | 1549                                  |
| <b>SHIPPING DATA</b>             |                                       |
| Gross Weight - Crated            | 448 lbs                               |
| Height - Crated                  | 46"                                   |
| Width - Crated                   | 75"                                   |
| Depth - Crated                   | 33"                                   |

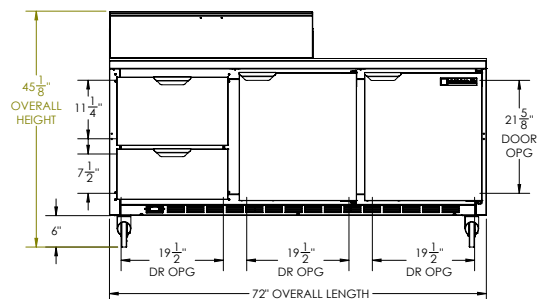
\*NOTE: Remote units are field wired and come with 6" legs.  
Refrigerant must be specified at time of order.

## Food Preparation Table - Standard Top Model: SPED72HC-10-2

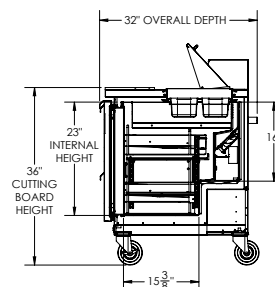
### Model Views



### PLAN VIEW



### ELEVATION VIEW



### SIDE VIEW

### \*ELECTRICAL CONNECTION



115/60/1  
NEMA 5-15P

Unit pre-wired at  
factory and include 8'  
long cord and plug set.



3779 Champion Blvd., Winston-Salem, NC 27105 1-888-845-9800 Fax: 1-336-245-6453 Beverage-Air.com Sales@bevair.com

an Ali Group Company

