



Stainless Vacuum Airpots

STAINLESS-LINED WITH COLOR OPTIONS

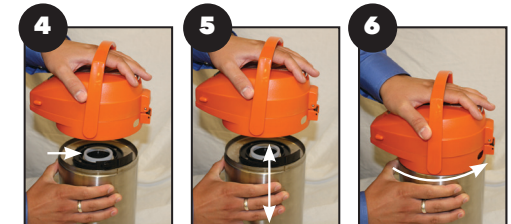
Add some color to your coffee station with the **Color Me SVAC Stainless Lined Airpot**. Easily switch out the lid and collar with just a touch of a button for color changes and replacements.



PRODUCT TRAINING:

How to change the lid on your Color Me SVAC stainless-lined airpot.

1. Remove the screw on the back of the airpot. Locate the black button near the back of the airpot.
2. Place your hand under the handle and use your other hand to push the black button in.
3. Secure the airpot with one hand while you use the other hand to turn the lid.
4. Lift the lid and collar from the base. Be sure that the rubber gasket remains on the base before you switch lids.
5. To replace lid/collar, line up the handle on the new lid with the button on the base of the airpot.
6. Press down and turn lid counter clockwise until you hear a "click" as the button secures into the lid/collar.
7. Replace screw that was removed.



Color Me SVAC

2.2 Liter (74.4 oz.) 6.75" X 8.75" X 11.5"

■ CTAL22BLU ■ CTAL22BR ■ CTAL22GR ■ CTAL22OR ■ CTAL22BL

2.5 Liter (84.5 oz.) 6.75" X 8.75" X 12.5"

■ CTAL25BLU ■ CTAL25BR ■ CTAL25GR ■ CTAL25OR ■ CTAL22BL

3.0 Liter (101.4 oz.) 6.75" X 8.75" X 13.25"

■ CTAL30BLU ■ CTAL30BR ■ CTAL30GR ■ CTAL30OR ■ CTAL22BL

3.7 Liter (125 oz.) 6.75" X 8.75" X 15"

■ CTAL37BLU ■ CTAL37BR ■ CTAL37GR ■ CTAL37OR ■ CTAL22BL

Ⓟ PARTS LIST

CTALCOLIDBLU	LID COLLAR HNDLE F/CTA AP BLUE
CTALCOLIDBR	LID COLLAR HNDLE F/CTA AP BRWN
CTALCOLIDGRN	LID COLLAR HNDLE F/CTA AP GRN
CTALCOLIDOR	LID COLLAR HNDLE F/CTA AP ORNG
CTALLIDBL	LID AIRPOT LEVER CTA BLACK
CTALLIDBLU	LID AIRPOT LEVER CTA BLUE
CTALLIDBR	LID AIRPOT LEVER CTA BROWN
CTALLIDGRN	LID AIRPOT LEVER CTA GREEN
CTALLIDOR	LID AIRPOT LEVER CTA ORANGE
CTALNRGAS	GASKET LINER FOR CTA SERIES
CTASP22	SUCTION PIPE FOR 2.2L CTA
CTASP25	SUCTION PIPE FOR 2.5L CTA
CTASP30	SUCTION PIPE FOR 3.0L CTA
CTASP37	SUCTION PIPE FOR 3.7L CTA

