



# T&S BRASS AND BRONZE WORKS, INC.

2 Saddleback Cove / P.O. Box 1088  
Travelers Rest, SC 29690

Model No.

**B-0302**

Item No.

Travelers Rest, SC: 800-476-4103 • Simi Valley, CA: 800-423-0150 • Fax: 864-834-3518 • www.tsbrass.com



**ADA Compliant**

This Space for Architect/Engineer Approval

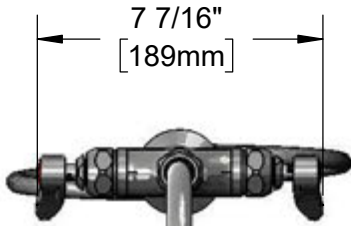
Job Name \_\_\_\_\_ Date \_\_\_\_\_

Model Specified \_\_\_\_\_ Quantity \_\_\_\_\_

Customer/Wholesaler \_\_\_\_\_

Contractor \_\_\_\_\_

Architect/Engineer \_\_\_\_\_



7 7/16"  
[189mm]

133X-V22  
5 3/4" Swivel Gooseneck w/  
2.2 GPM Vandal Resistant  
Aerator.  
Converts to Rigid w/  
014200-45  
Lock Washer (Included).

5 3/4"  
[145mm]

Quarter-Turn  
Eterna Cartridges w/  
Spring Checks &  
Lever Handles w/  
Color Coded Indexes

13 1/2"  
[343mm]

2 5/16"  
[58mm]

9 1/16"  
[230mm]

Mounting Surface

1 1/4"  
[32mm]  
Maximum  
Thickness

Ø 2 1/4"  
[57mm]  
Flange

18" Flexible  
Stainless Steel  
Supply Hoses

Compression Fittings  
for 5/8" O.D. Copper Tubing  
(Remove Compression Nut  
for 1/2" NPSM Male)

Rough-In Requirement:  
Ø 1 1/2" [38mm] Mounting Hole

**Product Specifications:**

Single Hole Deck Mount Mixing Faucet, Quarter-Turn Eterna Cartridges w/ Spring Checks, Lever Handles, 5 3/4" Swivel/Rigid Gooseneck w/ 2.2 GPM Vandal Resistant Aerator & 18" Flexible Stainless Steel Supply Hoses w/ 1/2" NPSM Male Inlets

**Product Compliance:**

ASME A112.18.1 / CSA B125.1  
NSF 61 - Section 9  
NSF 372 (Low Lead Content)  
ANSI A117.1 (ADA)



# T&S BRASS AND BRONZE WORKS, INC.

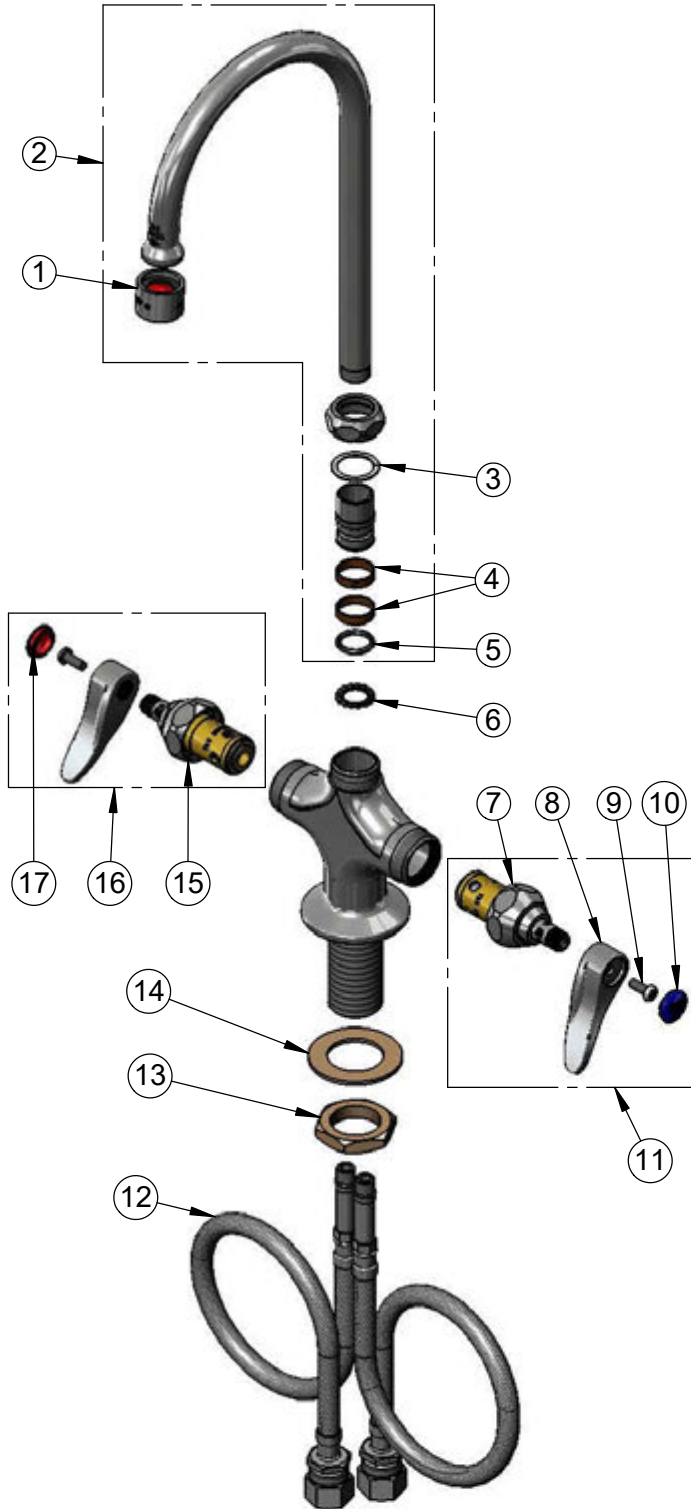
2 Saddleback Cove / P.O. Box 1088  
Travelers Rest, SC 29690

Model No.

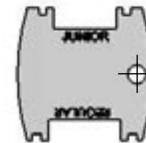
**B-0302**

Item No.

Travelers Rest, SC: 800-476-4103 • Simi Valley, CA: 800-423-0150 • Fax: 864-834-3518 • www.tsbrass.com



| ITEM NO. | SALES NO.   | DESCRIPTION                                                                    |
|----------|-------------|--------------------------------------------------------------------------------|
| 1        | B-0199-06   | VR 2.2 GPM Aerator w/ Key                                                      |
| 2        | 133X-V22    | 5 3/4" Gooseneck w/ 2.2 GPM VR Aerator                                         |
| 3        | 009538-45   | Swivel Washer                                                                  |
| 4        | 011429-45   | Swivel Sleeves (2)                                                             |
| 5        | 001074-45   | O-Ring                                                                         |
| 6        | 014200-45   | Star Washer, Anti-Rotation                                                     |
| 7        | 012442-40NS | Quarter-Turn Eterna Cartridge w/ Spring Check, LTC                             |
| 8        | 001638-45NS | Lever Handle (New Style)                                                       |
| 9        | 000925-45   | Lab Handle Screw                                                               |
| 10       | 018506-19NS | Blue Button Index, Press-in                                                    |
| 11       | 002711-40NS | Quarter-Turn Eterna Cartridge w/ Spring Check, Handle, Blue Index & Screw, LTC |
| 12       | 012534-45   | 18" Flexible Supply Hose (2)                                                   |
| 13       | 000965-45   | Lock Nut                                                                       |
| 14       | 002290-45   | Lock Washer                                                                    |
| 15       | 012443-40NS | Quarter-Turn Eterna Cartridge w/ Spring Check, RTC                             |
| 16       | 002712-40NS | Quarter-Turn Eterna Cartridge w/ Spring Check, Handle, Red Index & Screw, RTC  |
| 17       | 001193-19NS | Red Button Index, Press-in                                                     |



015425-45  
Vandal Resistant Key

**Product Specifications:**

Single Hole Deck Mount Mixing Faucet, Quarter-Turn Eterna Cartridges w/ Spring Checks, Lever Handles, 5 3/4" Swivel/Rigid Gooseneck w/ 2.2 GPM Vandal Resistant Aerator & 18" Flexible Stainless Steel Supply Hoses w/ 1/2" NPSM Male Inlets

**Product Compliance:**

ASME A112.18.1 / CSA B125.1  
NSF 61 - Section 9  
NSF 372 (Low Lead Content)  
ANSI A117.1 (ADA)