



# T&S BRASS AND BRONZE WORKS, INC.

2 Saddleback Cove / P.O. Box 1088  
Travelers Rest, SC 29690

Model No.

**B-0286-LNEZ**

Item No.

Travelers Rest, SC: 800-476-4103 • Simi Valley, CA: 800-423-0150 • Fax: 864-834-3518 • www.tsbrass.com



**ADA Compliant**

This Space for Architect/Engineer Approval

Job Name \_\_\_\_\_ Date \_\_\_\_\_

Model Specified \_\_\_\_\_ Quantity \_\_\_\_\_

Customer/Wholesaler \_\_\_\_\_

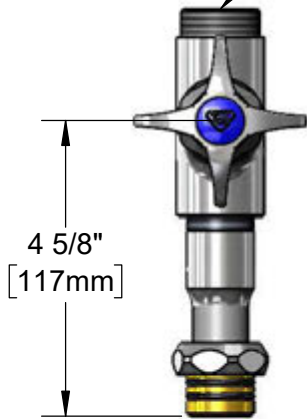
Contractor \_\_\_\_\_

Architect/Engineer \_\_\_\_\_



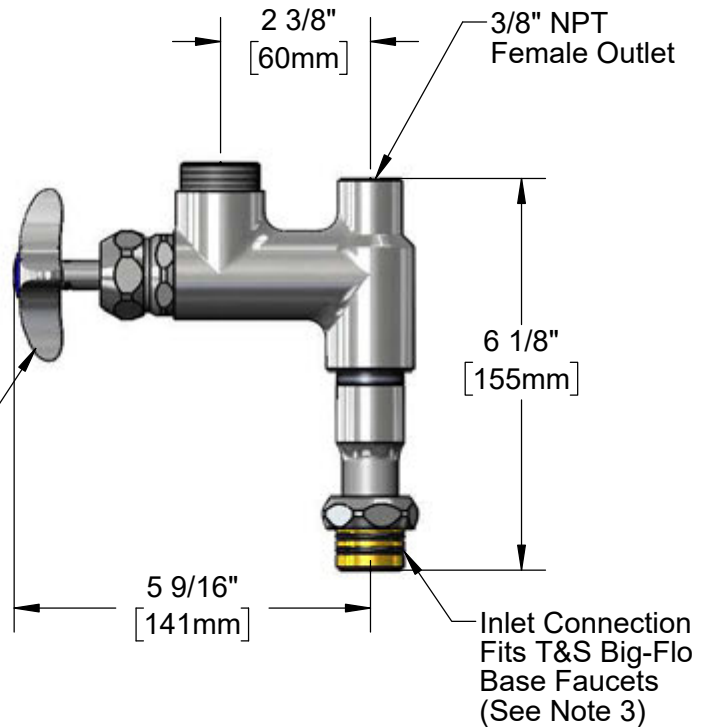
Swivel to Rigid Lock  
Washer (Included)

Swivel Outlet Accepts  
T&S Big-Flo Swing  
Nozzles



4 5/8"  
[117mm]

Big-Flo Compression  
Cartridge w/ 4-Arm  
Handle & Blue Index



2 3/8"  
[60mm]

3/8" NPT  
Female Outlet

6 1/8"  
[155mm]

5 9/16"  
[141mm]

Inlet Connection  
Fits T&S Big-Flo  
Base Faucets  
(See Note 3)

## Notes:

1. Add-On Faucet is an Addition to Big-Flo Pre-Rinse Units and is Installed in Outlets of Base Big-Flo Mixing Faucets of Units Before Fitting Riser Pipes
2. Lever Handle Controls Water On-Off Thru Nozzle Only. Pressure is Always "On" in Riser Pipe (Controlled by Base Mixing Faucet)
3. Place Lock Washer into Base Faucet Outlet & Lubricate O-Rings Prior to Installing Add-On Faucet

## Product Specifications:

Big-Flo Add-On Faucet w/ Big-Flo Compression Cartridge & 4-Arm Handle

## Product Compliance:

ASME A112.18.1 / CSA B125.1  
NSF 61 - Section 9  
NSF 372 (Low Lead Content)  
ANSI A117.1 (ADA)



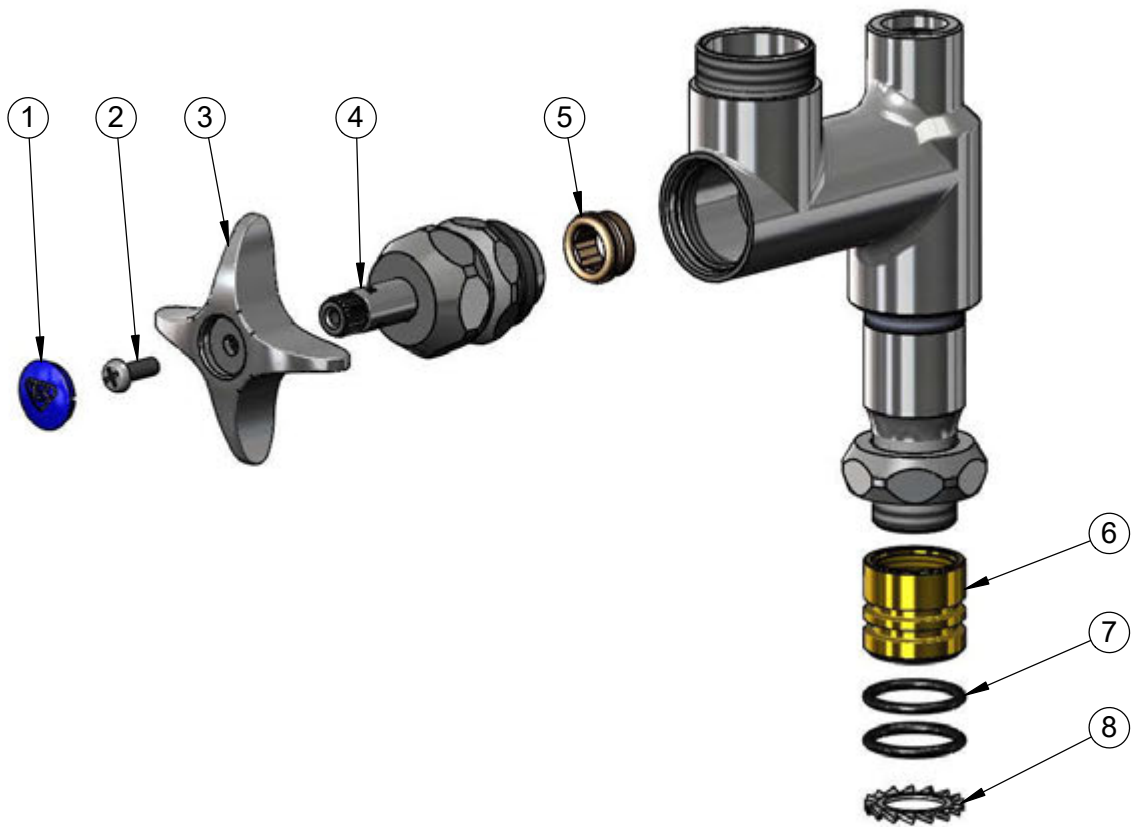
**T&S BRASS AND BRONZE WORKS, INC.**  
2 Saddleback Cove / P.O. Box 1088  
Travelers Rest, SC 29690

Model No.  
**B-0286-LNEZ**

Item No.

Travelers Rest, SC: 800-476-4103 • Simi Valley, CA: 800-423-0150 • Fax: 864-834-3518 • [www.tsbrass.com](http://www.tsbrass.com)

ITEM NO.	SALES NO.	DESCRIPTION
1	018506-19NS	Blue Button Index, Press-in
2	000925-45	Lab Handle Screw
3	002521-45NS	4-Arm Handle (New Style)
4	006482-40NS	Big-Flo Cartridge, RTC
5	000764-20	Seat, Big-Flo
6	000847-20	Big-Flo Swivel Piece
7	001068-45	O-ring
8	016807-45	Serrated Lock Washer



Product Specifications:  
Big-Flo Add-On Faucet w/ Big-Flo Compression Cartridge & 4-Arm Handle

Product Compliance:  
ASME A112.18.1 / CSA B125.1  
NSF 61 - Section 9  
NSF 372 (Low Lead Content)  
ANSI A117.1 (ADA)