



ITEM #

BOTTLE COOLERS

EBC50-B

EBC79-B

EBC65-B

EBC94-B

STANDARD FEATURES

⌘ HEAVY DUTY CONSTRUCTION

Top made of solid 18" gauge stainless steel for easy cleaning. Wear resistant black vinyl exterior, and galvanized interior and anodized aluminium bottle rails. Wear resistant black vinyl exterior, and galvanized interior and coved corners.

⌘ RIGHT SIDE MOUNT COMPRESSOR

Compressor is mounted on the right side with service friendly slide out rail system. Drain is located in rear of cabinet to keep unit pristine at all times.

⌘ ENHANCED REFRIGERATION SYSTEM

Factory engineered oversized and balanced refrigeration system. R-290 Hydrocarbon refrigerators maintain temperature from 28 °F to 38 °F and keeps beer ice cold. Hot gas evaporator in drain pan for efficient condensate evaporation.

⌘ ANALOG THERMOSTAT

⌘ HIGH DENSITY POLYURETHANE INSULATION

The entire unit has Ecomate® CFC free polyurethane insulation foamed in place for extra strength and energy efficiency.

⌘ RUGGED REMOVABLE BOTTLE CAP OPENER AND CAP CATCHER

⌘ HEAVY DUTY ADJUSTABLE BIN DIVIDERS, EPOXY COATED

Berg EBC50-B and EBC65-B come with 3 and 4 dividers respectively and EBC79-B and EBC94-B come with 7, for maximum capacity.



EBC50-B



EBC65-B



EBC79-B



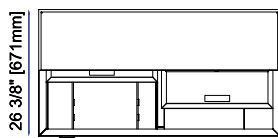
MODEL	LIDS	CASE CAPACITIES		AMPS.	HP	VOLTS	NEMA PLUG	CORD LENGTH	CABINET DIMENSIONS			SHIPPING	
		12 oz. can	12 oz. bottle						WIDTH	DEPTH	HEIGHT	WEIGHT	Ft³
REFRIGERATION													
EBC50-B	2	24.8	19.0	2.0	1/4	115/60/1	5-15P	8'	50 ⅜"	26 ¼"	33 ⅝"	236	37.0
EBC65-B	2	33.6	26.0	2.0	1/4	115/60/1	5-15P	8'	65 ½"	26 ¼"	33 ⅝"	275	50.5
EBC79-B	3	45.1	33.5	2.0	1/4	115/60/1	5-15P	8'	80"	26 ¼"	33 ⅝"	315	57.0
EBC94-B	3	57.0	42.0	2.0	1/4	115/60/1	5-15P	8'	96"	26 ¼"	33 ⅝"	379	69.0

* Depth does not include 1" Bumper



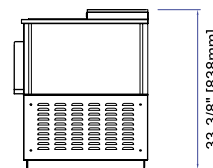
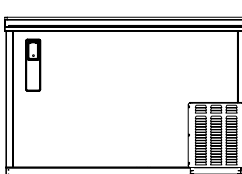
Bottle Coolers

EBC50-B TOP



EBC50-B FRONT

50 1/2" [1279mm]



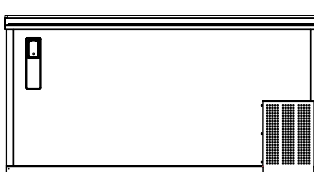
COMMON SIDE VIEW

EBC65-B TOP

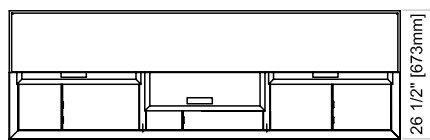


EBC65-B FRONT

65 1/2" [1665mm]

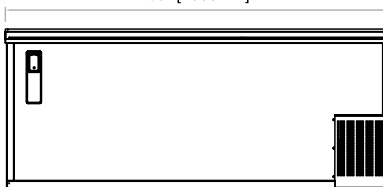


EBC79-B TOP

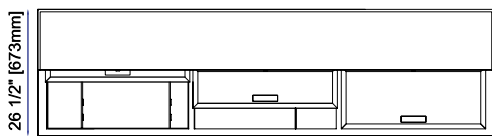


EBC79-B FRONT

80" [2033mm]

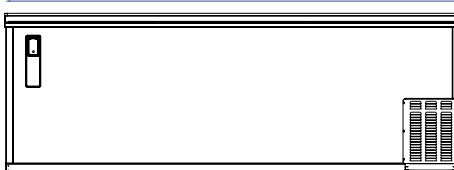


EBC94-B TOP



EBC94-B FRONT

95" [2413mm]



* Specifications



CABINET CONSTRUCTION

- 18" gauge stainless steel top and stylish black vinyl finish front, sides and back. Interior built is galvanized steel walls with coved corner stainless steel floor.
- Then entire cabinet has 1-1/2" CFC-free polyurethane insulation foamed in place.

REFRIGERATION SYSTEM

- Oversized and balanced refrigeration system.
- Self-contained capillary tube system using environmentally friendly hydrocarbon refrigerant. R-290 holding temperature at 33 °F to 38 °F.
- Front breathing/side mounted compressor for ease of service and placement in narrow spaces. Condensing unit is behind the front grill, slides out for easy cleaning and maintenance.

ELECTRICAL

- The whole unit is completely pre-wired at factory with cord and plug set included and ready for final connection to a 115/60/1 phase.

STANDARD EXTRAS

- Rugged, removable bottle cap opener and cap catcher.
- Heavy duty adjustable bin dividers, epoxy coated.

- Hot gas evaporator in drain pan for efficiency condensation.
- Forced air cooling system for faster cooling and constant temperature in the cabinet.
- Large fan motor and fan blades for better air circulation.
- Self contained system, no plumbing necessary.
- Analog thermostat.

WARRANTY

- Continental US
- Two year labor and parts warranty.
- Five year compressor warranty.