



ITEM #

Back Bar Slim Line

EBB-24-48G-B EBB-24-60G-B EBB-24-72G-B

STANDARD FEATURES

⌘ HEAVY DUTY CONSTRUCTION

Top made of solid 18" gauge stainless steel for easy cleaning. Wear resistant black vinyl exterior, and galvanized interior with durable stainless steel floor, and coved corners. Ecomate® insulation foamed in place.

⌘ DUAL PANE THERMA GLASS DOORS

Black aluminum frame, merchandise your product with greater visibility.

⌘ ENHANCED REFRIGERATION SYSTEM

Factory engineered oversized and balanced refrigeration system. R-290 Hydrocarbon refrigerators maintain temperature between 33 °F to 38 °F, keeping beers ice cold.

⌘ LEFT SIDE MOUNT COMPRESSOR & FRONT BREATHING

System allows easy service and unrestricted placement for the unit even in narrow spaces.

⌘ ANALOG THERMOSTAT

⌘ STAY OPEN DOORS WITH LOCKS AND LIGHT

90° stay open door feature and LED light underneath the mullion.

⌘ ADJUSTABLE, COATED WIRE SHELVES

⌘ GREATER USABLE INTERIOR CAPACITY

Evaporator located on left side above compressor providing greater working interior capacity.

⌘ 24" DEPTH FOR LIMITED SPACE INSTALLS

⌘ MAGNETIC GASKET

Built of one piece, the gaskets are removable without tools for ease of cleaning and replacement.



EBB-24-48G-B



EBB-24-60G-B



EBB-24-72G-B



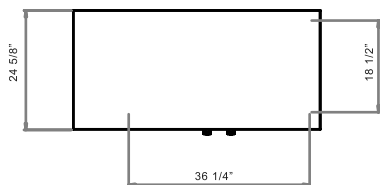
MODEL	DOORS	CAPACITY 12 oz. can	SHELVES	AMPS.	HP	VOLTS	NEMA PLUG	CORD LENGTH	CABINET DIMENSIONS			SHIPPING	
									WIDTH	DEPTH	HEIGHT	WEIGHT	Ft³
GLASS DOORS													
EBB-24-48G-B	2	300	4	2.0	1/4	115/60/1	5-15P	8'	49 5/8"	24 5/8"	35 1/2"	238	48
EBB-24-60G-B	2	390	4	2.0	1/4	115/20/1	5-15P	8'	62 3/4"	24 5/8"	35 1/2"	291	55
EBB-24-72G-B	3	540	6	2.0	1/4	115/60/1	5-15P	8'	72"	24 5/8"	35 1/2"	356	77

* Depth does not include 1" Bumper

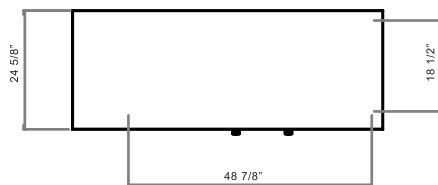


Back Bar Slim Line

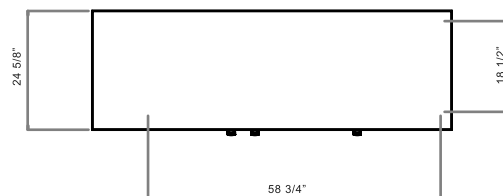
EBB-24-48G-B TOP



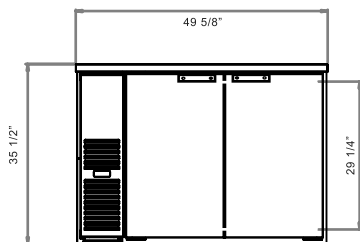
EBB-24-60G-B TOP



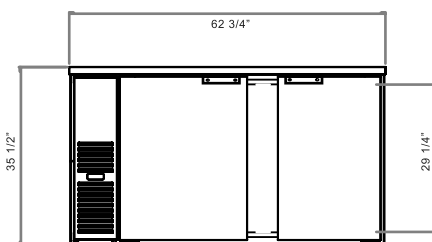
EBB-24-72G-B TOP



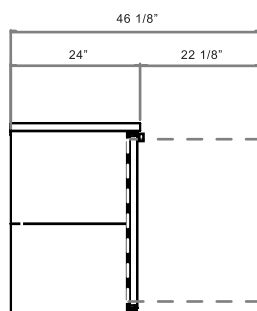
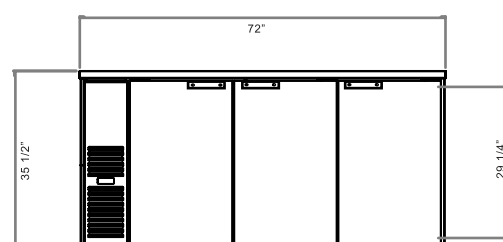
EBB-58G-B FRONT



EBB-68G-B FRONT



EBB-94G-B FRONT



COMMON SIDE VIEW



* Specifications



CABINET CONSTRUCTION

- 18 gauge stainless steel top and stylish black vinyl finish front, sides and back. Interior built is galvanized steel walls with coved corner stainless steel floor. Interior LED light.
- Then entire cabinet has 1-1/2" CFC-free polyurethane insulation foamed in place.

DOORS & SHELVES

- Built of one piece, the gasket is removable without tools for ease of cleaning and replacement. Door's in step design gives added protection to the freezers gasket.
- 3 Adjustable epoxy coated wire shelves per unit.

REFRIGERATION SYSTEM

- Oversized and balanced refrigeration system.
- Self-contained capillary tube system using environmentally friendly hydrocarbon refrigerant. R-290 holding temperature at 33 °F to 38 °F.
- Front breathing/side mounted compressor for ease of service and placement in narrow spaces. Condensing unit is behind the front grill, slides out for easy cleaning and maintenance.
- Forced air cooling system for faster cooling and constant temperature in the cabinet.
- Large fan motor and fan blades for better air circulation.
- Self contained system, no plumbing necessary.
- Analog thermostat.

ELECTRICAL

- The whole unit is completely pre-wired at factory with cord and plug set included and ready for final connection to a 115/60/1 phase.

WARRANTY

- Continental US
- Two year labor and parts warranty.
- Five year compressor warranty.