



**AMERICAN EAGLE®**  
FOOD MACHINERY, INC.

## AE-G12N / G22N Countertop Meat Grinders

773.376.0800 (P) • 773.376.2010 (F) • 3131 S. Canal St. Chicago, IL 60616

**American Eagle® Meat Grinders Feature Patented Design, All-Inclusive Accessories, And Competitive Pricing, Making Them The Best Value For Foodservice Professionals, Hunters, Butchers, Pet Owners, Or Home Enthusiasts Alike!**

### Quality Design

- Powerful 1 HP (G12N) or 1.5 HP (G22N) Motor
- 100% Stainless Steel Grinder Head With Rifled Chamber And Quick Pass Auger Reduces Jams And Food Waste
- 100% Durable Steel Alloy Gear Driven Transmission
- Permanently Lubricated, Sealed Motor Design For Food Safety And Low Maintenance
- Superior Electronics And Shielded Wiring Ensure Reliable Operation
- Easy To Clean, Attractive, High Polish Stainless Steel Housing With No Sharp Corners Or Seams
- ETL Certified To NSF No.8, CSA, And CE Standards

AE-G12N  
#12 MEAT GRINDER



AE-G22N  
#22 MEAT GRINDER



RIFLED  
GRINDER  
HEAD  
CHAMBER



### Standard Accessories

- Stainless Steel Feeder Pan
- Meat Pusher and Stuffer Tube (3/4")
- 1/4" (6mm) Stainless Steel Plate
- 5/16" (8mm) Stainless Steel Plate
- Stainless Steel Knife



### Standard Features

- Forward/Reverse switch\*
- Motor Overload Protection, Reset Button
- Standard #12 Hub For Optional Attachments
- Non-Slip Rubber Feet
- Warranty: 1 Year Parts / 1 Year Labor\*\*

### Optional Accessories

- AE-TS12H Meat Tenderizer Head
- AE-JS12H Jerky Slicer Head
- AE-VS12NH Vegetable Cutter
- AE-MC12NH Meat Cutter Head
- AE-HP100 4" Hamburger Patty Press

AE-TS12H Installed



AE-VS12NH



AE-JS12H



AE-HP100



AE-MC12NH



Proud Member of:  
**NAFEM**  
North American Association of  
Food Equipment Manufacturers

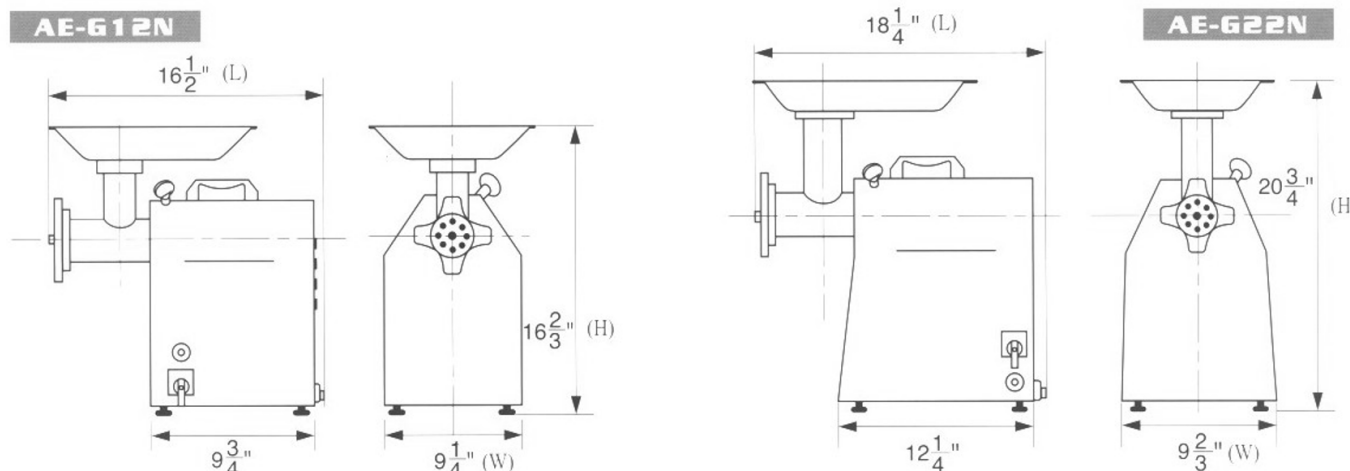
**Quality • Value • Reliability**



**AMERICAN EAGLE**<sup>®</sup>  
FOOD MACHINERY, INC.

## AE-G12N / G22N Countertop Meat Grinders

sales@ameagle.biz • www.americaneaglemachine.com



### Specifications and Shipping Information

| Model   | Capacity   | Motor  | Amps | RPMS (Auger) | Voltage V/HZ/PH | Shipping Dimensions   | Ship Weight | Net Weight |
|---------|------------|--------|------|--------------|-----------------|-----------------------|-------------|------------|
| AE-G12N | 250 lbs/hr | 1 HP   | 8    | 170          | 115/60/1        | 18" L x 13" W x 16" H | 62 lbs      | 59 lbs     |
| AE-G22N | 450 lbs/hr | 1.5 HP | 16   | 170          | 115/60/1        | 23" L x 16" W x 20" H | 84 lbs      | 79 lbs     |

### Optional AE-TS12H Meat Tenderizer Head

- Durable Stainless Steel Construction, Fits Standard #12 Hub
- Transforms Tougher Meats Into Delicious, Salable Product

### Optional AE-JS12H Jerky Slicer Head

- Durable Stainless Steel Construction, Fits Standard #12 Hub
- Easily Slice Meat Into Strips, Perfect For Jerky Or Fajitas

### Optional AE-VS12NH Vegetable Cutter

- Dual Hopper Chamber Accommodates Large Variety Of Items, Fits Standard #12 Hub, Comes With 1/4" SS Shredding Plate
- Optional Slicer Plate Is Adjustable To Following Sizes Using Spacers: 1/16" (None), 1/8" (Thin Spacer), 3/16" (Thick Spacer)
- Optional Shredder Plate sizes available: 1/4", 5/16", 3/32"

### Optional AE-MC12NH Meat Cutter Head

- Durable Stainless Steel Construction, Fits Standard #12 Hub
- Easily Slice Or Shred Meat, Perfect For Fajitas Or Ethnic Cuisine!

### Optional AE-HP100 4" Hamburger Patty Press

- Durable Stainless Steel Construction And Convenient Paper Liner Holder. Quickly Transform Ground Beef Into Hamburger Patties!

### Optional Grinder Plates

| Description           | AE-G12N Part # | AE-G22N Part # |
|-----------------------|----------------|----------------|
| 3-Hole Plate (0mm)*** | AE-G12N/08-00  | AE-G22N/06-00  |
| 1/16" (2mm)           | AE-G12N/08-02  | AE-G22N/06-02  |
| 5/32" (4mm)           | AE-G12N/08-04  | AE-G22N/06-04  |
| 1/4" (6mm)            | AE-G12N/08-06  | AE-G22N/06-06  |
| 5/16" (8mm)           | AE-G12N/08-08  | AE-G22N/06-08  |
| 3/8" (10mm)           | AE-G12N/08-10  | AE-G22N/06-10  |
| 1/2" (12mm)           | AE-G12N/08-12  | AE-G22N/06-12  |
| 9/16" (14mm)          | AE-G12N/08-14  | AE-G22N/06-14  |
| 5/8" (16mm)           | AE-G12N/08-16  | AE-G22N/06-16  |
| 11/16" (18mm)         | AE-G12N/08-18  | AE-G22N/06-18  |
| 3/4" (20mm)           | N/A            | AE-G22N/06-20  |

\* Reverse mode should only be used with meat grinder head, using reverse on other attachments may cause damage not covered by warranty

\*\* Warranty must be registered. Please refer to manual on proper assembly of grinder head. Improper use voids warranty. 1 year labor warranty only applies to machines manufactured starting from 2016. Warranty does not cover accessories or items subject to wear and tear such as knives or plates.

\*\*\* This plate must be used when stuffing sausage

Proud Member of:  
**NAFEM**  
North American Association of  
Food Equipment Manufacturers

**Quality • Value • Reliability**