



USER MANUAL
Model # HSS1GV3

Heavy Duty Variable Speed Commercial
Food Blender with 1 Gallon Stainless
Steel Container

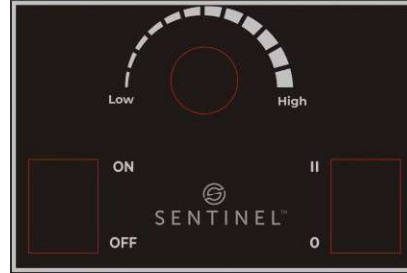


SAFETY PRECAUTIONS

1. READ AND SAVE THIS MANUAL.
2. Do not immerse the blender in water or other liquids, doing so can result in electrical shock.
3. Always unplug the blender from the outlet prior to handling or cleaning.
4. Avoid contact with moving parts while operating the blender.
5. CAUTION: Blades are sharp. Handle carefully.
6. This blender is intended to be used by trained personal only. Individuals who lack experience operating a blender need supervision during use.
7. Never remove parts or clean the blender unless it is unplugged from the electrical outlet.
8. Secure the lid before turning the blender on.
9. Do not use the blender if the cord or plug is damaged. Contact the nearest authorized service agency for repair.
10. Do not use outdoors.
11. Do not place hands or utensils in the blender jar while it is operating. Doing so can cause severe personal harm and/or damage to the blender.
12. When blending hot liquids (anything over 100°F), remove the center piece of the lid and start on the lowest speed setting. Do not stand directly over the blender while in use.
13. Do not put carbonated liquids in the blender jar.
14. Do not blend oil-based products (such as peanut butter) for more than five minutes.
15. Ear protection is recommended if blending for long periods of time.
16. Never leave blender unattended while operating.
17. Ensure you are using this blender on a properly grounded outlet. This blender comes with a 120V NEMA 5-15P plug. If unsure of your electrical configuration, contact a professional electrician before operating.

OPERATION INSTRUCTIONS

Variable Speed



1. Ensure the blender is in the off position and place the container on the blender base. Make sure the blender is fully seated so that the drive coupling is in contact with the container and the base. Plug the blender into a 120V outlet.
2. Put the ingredients into the container and place the lid on. Push the lid down as far as it can go on to the container.
3. **Speed Settings:** This blender has adjustable speed settings using a dial knob. The dial knob can be used to adjust the speed from low to high during blending allowing for ultimate user control.
4. **Pulse:** This blender is also equipped with a pulse feature, which is engaged by holding down the "Pulse" button. The blender will run on high speed until the button is released. It will then return to the current speed setting.
5. Always allow the motor to stop completely before adding or removing the container from the base. Not following this warning could cause damage to the blender, which may void the warranty if misuse is deemed the cause of the malfunctions.
6. Do not operate the blender without a lid.
7. Always hold the blender container with one hand by the top of the lid to ensure the container remains secure on the base.
8. Wash and dry the container after each use.

CLEANING & SANITIZING

Wash, rinse, sanitize, and dry the container prior to initial use. Blender containers should be cleaned after EVERY use to prevent residue build up around the blade assembly. Due to the metal construction of drive components, this blender's container is **HANDWASH ONLY**. **DO NOT** run through a dishwasher.

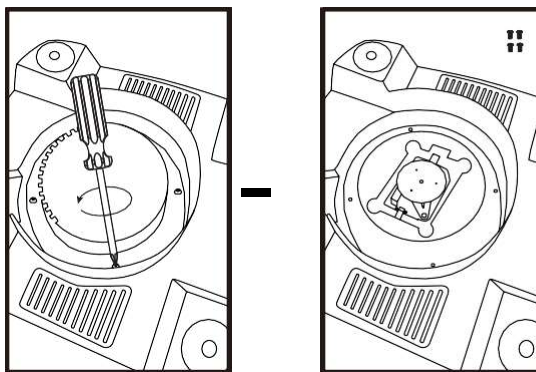
1. Remove the container from the base.
2. Thoroughly clean the container using water, a sponge, and dish soap. Rinse the container in water
3. Sanitize the outside of the container and the base with a soft cloth and a sanitizing solution.
4. Fill container with sanitizing solution. Place the container on top of the base and secure the lid. Turn the blender on to high speed to allow the sanitizing solution to work its way into the blade assembly and around the jar. Dump the solution into a sink and allow the container to air dry.
5. Allow the lid to soak in the sanitizing solution for at least 2 minutes and then allow it to air dry.
6. Ensure all parts of the blender are dried thoroughly before the next use.

BLENDER COUPLING REPLACEMENT INSTRUCTIONS

You will need:

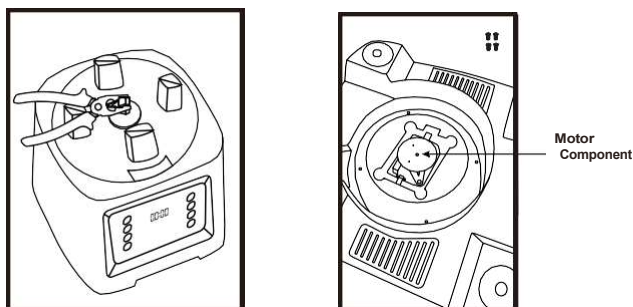
- Pliers
- Phillips Screwdriver

1. Make sure the blender is unplugged. Use a Phillips Screwdriver to remove the cover from the bottom of the blender (Figure 1).



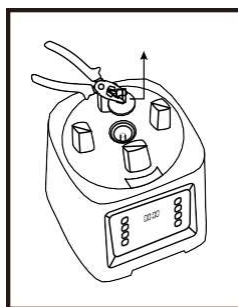
(Figure 1)

2. Use pliers to secure the coupling with your left hand, at the same time turning the motor component at the bottom of the blender counterclockwise with your right hand (Figure 2).



(Figure 2)

3. Remove the coupling by pulling upwards. (Figure 3).

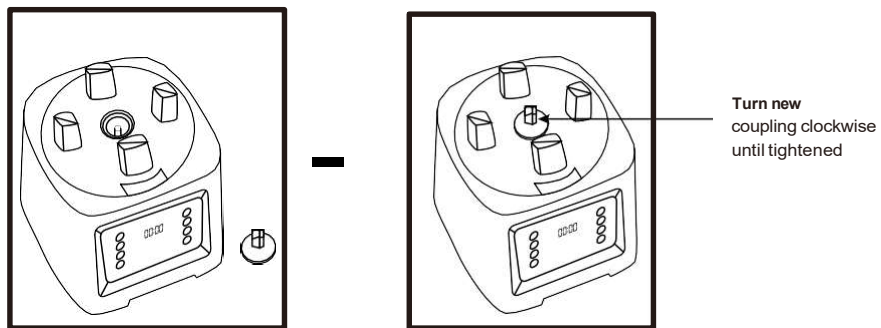


(Figure 3)

4.

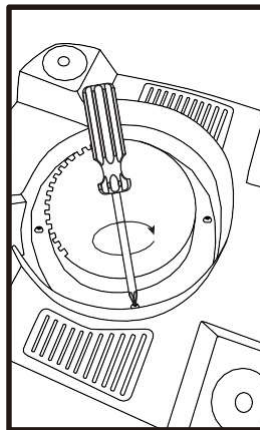
BLENDER COUPLING REPLACEMENT INSTRUCTIONS

4. Install the new coupling clockwise on the blender (Figure 4).



(Figure 3)

5. Reinstall the cover for the bottom of the blender (Figure 5).



(Figure 5)



One Year Limited Warranty

Sentinel warrants its equipment against defects in materials and workmanship, subject to the following conditions:

Sentinel is warranted for one year, effective from the date of purchase by the original owner. A copy of the original receipt or other proof of purchase is required to obtain warranty coverage. This warranty applies to the original owner only, and is not assignable.

Should any product fail to function in its intended manner under normal use within the limits defined in this warranty, at Sentinel's discretion, such product will be repaired, replaced with a refurbished unit, or replaced with a new unit by Sentinel, after defective unit has been inspected and defect has been confirmed. Sentinel does not assume any liability for extended delays in replacing any item beyond its control. This warranty does not apply to rubber and non-metallic synthetic parts that may need to be replaced due to normal usage, wear or lack of preventative maintenance.

This warranty covers products shipped into the 48 contiguous United States, Hawaii, and metropolitan areas of Alaska and Canada. Warranty coverage on products used outside the 48 contiguous United States, Hawaii and metropolitan areas of Alaska and Canada may vary.

The following conditions are not covered by warranty:

- Equipment failure relating to improper installation, improper utility connection or supply and problems due to improper ventilation.
- Equipment that has not properly been maintained, damage from improper cleaning, and water damage to controls.
- Equipment that has not been used in an appropriate manner, or has been subject to misuse, neglect, abuse, accident, alteration, negligence, damage during transit, delivery or installation, fire, flood, riot, or act of God.
- Equipment that has the model number or serial number removed or altered.
- Equipment on which the security seal has been broken.

If the equipment has been changed, altered, modified, or repaired without express written permission from Patriot, then the manufacturer shall not be liable for any damages to any person or to any property, which may result from the use of this equipment thereafter.

This equipment is intended for commercial use only and this warranty is void if equipment is used in other than a commercial application.

For warranty and service call 888-585-9440. Please have your model number, serial number and proof of purchase ready.

"THE FOREGOING WARRANTY IS IN LIEU OF ANY AND ALL WARRANTIES EXPRESSED OR IMPLIED INCLUDING ANY IMPLIED WARRANTY OF MERCHANTABILITY OR FITNESS FOR PARTICULAR PURPOSES AND CONSTITUTES THE ENTIRE LIABILITY OF ACE. IN NO EVENT DOES THE LIMITED WARRANTY EXTEND BEYOND THE TERMS STATED HEREIN."