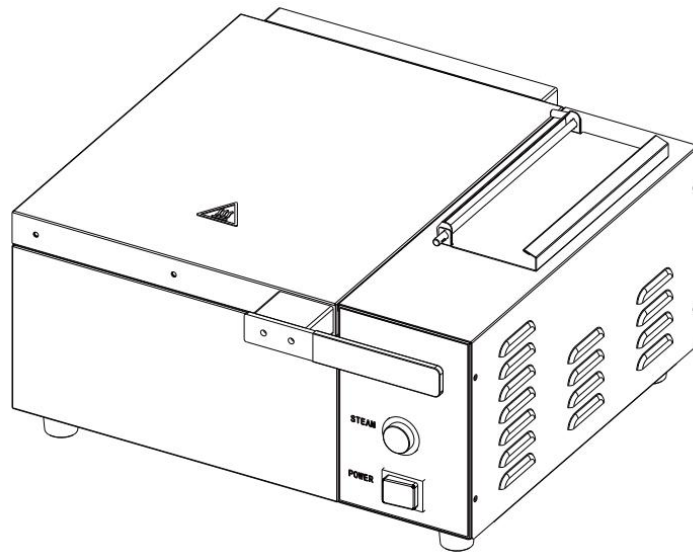


PATRIOT

Countertop Steamer User Manual



Model: FZ-01A

Please read and keep these instructions.



Intertek
4010483

CONFORMS TO UL STD.197
CERTIFIED TO CSA STD.22.2 NO.109

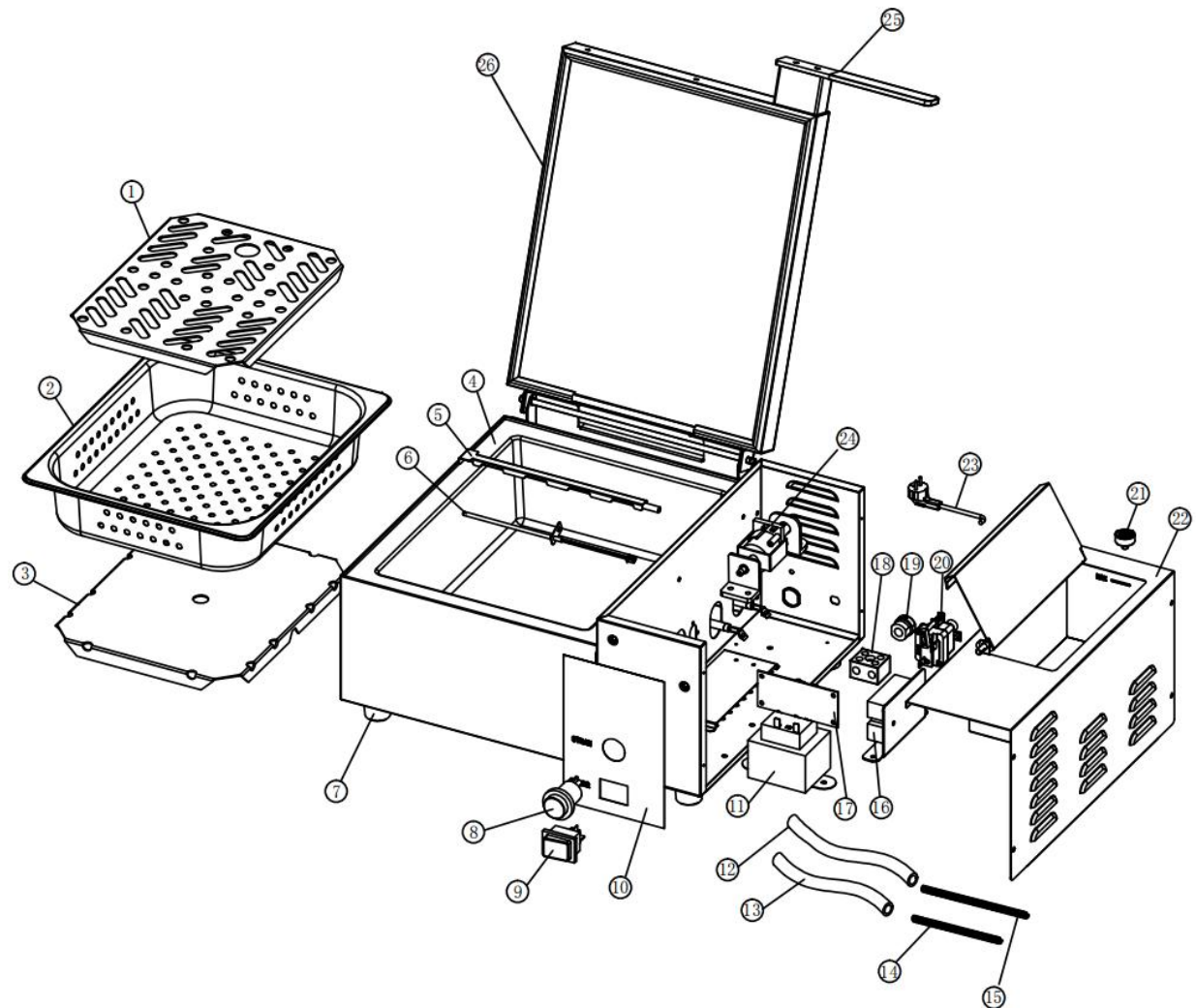
WARNINGS

- Do not touch any hot surfaces
- Plug only into a 3-hole grounded electrical outlet
- Do not immerse unit, cord or plug in liquid at any time
- Unplug cord from outlet when not in use and before cleaning
- Do not operate unattended
- Do not use this unit for anything other than its intended use
- Do not use outdoors
- Always use on a firm, dry and level surface
- Do not use if unit has a damaged cord or if the plug has been damaged in any manner
- Keep children and animals away from unit
- Any incorrect installation, alterations, adjustments and or improper maintenance can lead to property loss and injury
- All repairs should only be done by authorized professionals
- Ensure that the designated power supply is adequate for continual usage and the voltage is correct

SPECIFICATIONS

Item No.	SKU No.	Voltage	Wattage	Dimenisions
FZ-01A	PA1800	120V	1800W	16.38"x 17.64"x 8.78"

IDENTIFICATION OF KEY PARTS



1. Steam Plate	14. Spring 305mm
2. 1/2 Size Perforated Food Pan	15. Spring 200mm
3. Evaporation Plate	16. Relay
4. Aluminum Pan	17. PCB Board
5. Water Pipe	18. Ceramic Terminal
6. NTC Sensor	19. Wire Buckle
7. Feet	20. Temperature Limiter
8. Humidity Control	21. Filter
9. Power Switch	22. Water Tank
10. Control Panel	23. Power Cord
11. Transformer	24. Pump
12. Silicone tube 330mm	25. Handle
13. Silicone tube 230mm	26. Gasket

1. Remove all packing materials both inside and outside the unit and place on a flat surface.
2. Clean steamer thoroughly before first use.
3. Position unit near a power outlet. It is not recommended to use an extension cord for this item.
4. Do not place in an area where gasoline, paint or flammable liquids are used or stored.
5. Unit must be operated with the legs installed.

1. Plug the unit into a grounded outlet.
2. Open the tank cover and make sure that the filter inside the tank is properly installed.
3. Fill the unit up with approximately 3 quarts of cold tap water (Do not overfill the tank). This unit is designed to be used with cold tap water. Distilled water may be used to reduce calcium/mineral deposit buildup.
4. Turn the on/off switch to the on position and allow for the unit to preheat for 25 minutes.
5. Once heated, open the top cover and place food into the pan (the included half size perforated food pan) then close the top cover.
6. Press the steam button for 2 seconds and release and wait 20 seconds for the steam to penetrate the food inside the unit. Repeat if product requires more steam. **Please note that pressing and holding the steam button for longer than 2 seconds at a time will often flood out and result in poor steaming.**
7. Remove the hot, steamed product from the unit.
8. Turn the power switch to off when finished using.

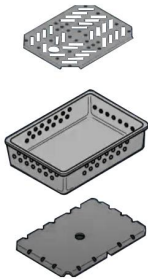
Warning: The exterior of the unit gets hot while in use!

CLEANING – NOTE:

To maintain cleanliness and increase service life, the unit should be cleaned daily. Do not immerse the unit in water or any other liquid. If liquid enters the electrical compartment it may cause a short circuit or electrical shock.

Daily Maintenance

1. Turn the power off, unplug the power cord, and allow the unit to cool down before proceeding.
2. Remove the false bottom, pan and diffuser pan. Wash the items in hot soapy water and then rinse and wipe dry.

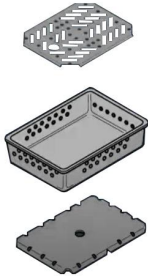


3. Wipe down the top cover, gasket, and the entire exterior of the unit with a clean, hot, damp cloth and wipe dry. Do NOT use a cloth that is dripping wet.
4. Reinstall the diffuser pan, pan and false bottom.

NOTE: Allow top cover to remain open overnight.

Monthly Maintenance

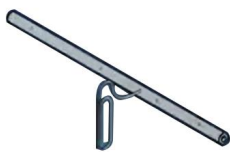
1. Turn the power off, unplug the power cord, and allow the unit to cool down before proceeding.
2. Remove the false bottom, pan and diffuser pan. Wash the items in hot soapy water and then rinse and wipe dry.



3. Wipe down the top cover, gasket, and the entire exterior of the unit with a clean, hot, damp cloth and wipe dry. Do NOT use a cloth that is dripping wet.
4. Remove the spray tube by lifting the loose end and pulling it out of the generator hole.



5. Slide the metal cover of the spray tube and use a paper clip to clear out all 18 holes on the tube if needed.



6. Gently wash the tube under running water to clear the deposits out of the loose end. Reattach the cover onto the tube.
7. Use a scraper or spatula to remove any excessive calcium/mineral buildup from the generator surface.
8. Thoroughly wipe the generator with a damp cloth to remove any loose buildup.
9. If the deposits are still excessive and difficult to remove, pour delimer solution onto the generator surface.
10. Use a sponge or dry towel to remove the solution from the generator surface. Then rinse the surface with clean water.
11. Reinstall the spray tube. Then plug in the power cord.

12. Open the tank cover.
13. Remove the water tank filter, located inside the tank by pulling it upwards and out of bottom hole.
14. Clean the filter by running it under tap water. Replace the filter if the screen is torn or damaged.
15. Reinstall the filter stem into the bottom hole of the tank.

One Year Limited Warranty

Patriot warrants its equipment against defects in materials and workmanship, subject to the following conditions:

Patriot is warranted for one year, effective from the date of purchase by the original owner. A copy of the original receipt or other proof of purchase is required to obtain warranty coverage. This warranty applies to the original owner only, and is not assignable.

Should any product fail to function in its intended manner under normal use within the limits defined in this warranty, at Patriot's discretion, such product will be repaired, replaced with a refurbished unit, or replaced with a new unit by Patriot, after defective unit has been inspected and defect has been confirmed. Patriot does not assume any liability for extended delays in replacing any item beyond its control. This warranty does not apply to rubber and non-metallic synthetic parts that may need to be replaced due to normal usage, wear or lack of preventative maintenance.

This warranty covers products shipped into the 48 contiguous United States, Hawaii, and metropolitan areas of Alaska and Canada. Warranty coverage on products used outside the 48 contiguous United States, Hawaii and metropolitan areas of Alaska and Canada may vary.

The following conditions are not covered by warranty:

- Equipment failure relating to improper installation, improper utility connection or supply and problems due to improper ventilation.
- Equipment that has not properly been maintained, damage from improper cleaning, and water damage to controls.
- Equipment that has not been used in an appropriate manner, or has been subject to misuse, neglect, abuse, accident, alteration, negligence, damage during transit, delivery or installation, fire, flood, riot, or act of God.
- Equipment that has the model number or serial number removed or altered.
- Equipment on which the security seal has been broken.

If the equipment has been changed, altered, modified, or repaired without express written permission from Patriot, then the manufacturer shall not be liable for any damages to any person or to any property, which may result from the use of this equipment thereafter.

This equipment is intended for commercial use only and this warranty is void if equipment is used in other than a commercial application.

For warranty and service call 888-585-9440. Please have your model number, serial number and proof of purchase ready.

"THE FOREGOING WARRANTY IS IN LIEU OF ANY AND ALL WARRANTIES EXPRESSED OR IMPLIED INCLUDING ANY IMPLIED WARRANTY OF MERCHANTABILITY OR FITNESS FOR PARTICULAR PURPOSES AND CONSTITUTES THE ENTIRE LIABILITY OF ACE. IN NO EVENT DOES THE LIMITED WARRANTY EXTEND BEYOND THE TERMS STATED HEREIN."