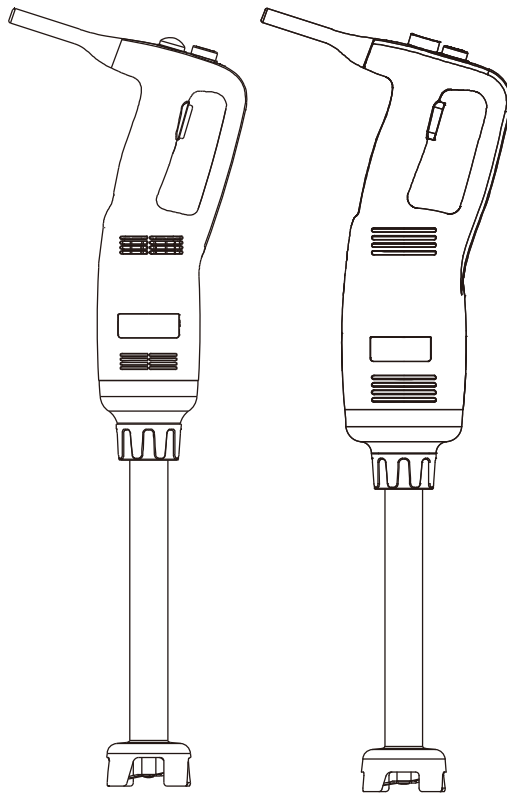




# SENTINEL™

## Commercial Variable Speed Immersion Blenders

### User Manual



**PA9610 / PA9612 / PA9615 / PA9616 / PA9618 / PA9621**

Please read this manual thoroughly prior to equipment operation or maintenance.



Conforms to UL 763 Certified to CSA C22.2 No. 195/Conforms to NSF/ANSI 8

# Table of Contents

Safety.....	3
Technical Data .....	4
Assembly.....	4
Cleaning.....	5
Operation.....	5-6
Working Position.....	7
Troubling Shooting.....	7
Parts List.....	8-9-10
Warranty.....	11

# Safety

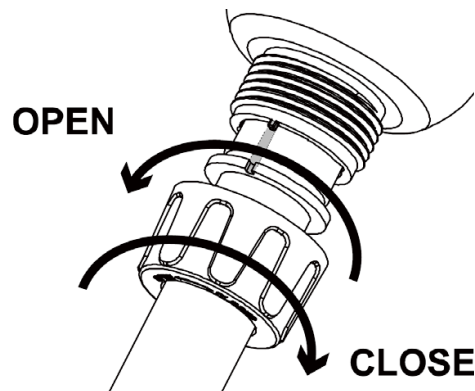
1. READ AND SAVE ALL INSTRUCTIONS
  2. Do not immerse the immersion blender in water or any other liquid, doing so can result in electrical shock.
  3. Always unplug from outlet prior to handling or cleaning.
  4. Avoid contact with moving parts while operating the immersion blender.
  5. Blades are extremely sharp, handle carefully.
  6. This immersion blender is not intended for use individuals with impaired mental and or motor skills. Individuals who lack experience operating an immersion blender need supervision during use.
  7. Never remove parts or clean the blender unless it is unplugged from the electrical outlet.
  8. Do not use the immersion blender if the cord or plug is damaged.
  9. Do not use the immersion blender outdoors.
  10. Do not allow the power cord to hang over the counter or come in contact with liquids or hot surfaces.
  11. Do not place hands or utensils near the immersion blender's blades.
  12. When blending hot liquids ensure the blades are fully submerged before turning on the immersion blender to avoid splashing.
  13. Do not stand directly over the blender while in use.
  14. Never leave the immersion blender unattended while operating.
  15. Ensure you are using this immersion blender on a properly grounded outlet.
- This blender comes with a 120V NEMA 5-15P plug

## Technical Data

Model	Voltage	Watts	Speed	HP	Shaft Length
PA9610	120V	500W	4000-16000 RPM	$\frac{3}{4}$	10"
PA9612	120V	500W	4000-16000 RPM	$\frac{3}{4}$	12"
PA9616	120V	500W	4000-16000 RPM	$\frac{3}{4}$	16"
PA9615	120V	750W	8000-18000 RPM	$1 - \frac{1}{4}$	16"
PA9618	120V	750W	8000-18000 RPM	$1 - \frac{1}{4}$	18"
PA9621	120V	750W	8000-18000 RPM	$1 - \frac{1}{4}$	21"

## Assembly

1. Remove the unit from the box and remove all packaging.
2. Clean the unit (refer to cleaning instructions prior to use).
3. Align and insert the coupling of the shaft or whisk in the clutch of the machine body.
4. Screw the shaft or whisk up to fasten it firmly to the machine body.
5. Make sure that the connection is tight before turning on the immersion blender.



## Cleaning

**Wash, rinse, and dry the blending shaft prior to initial use.**  
**Blades and shaft should be cleaned after EVERY use to prevent residue buildup around the blade assembly.**

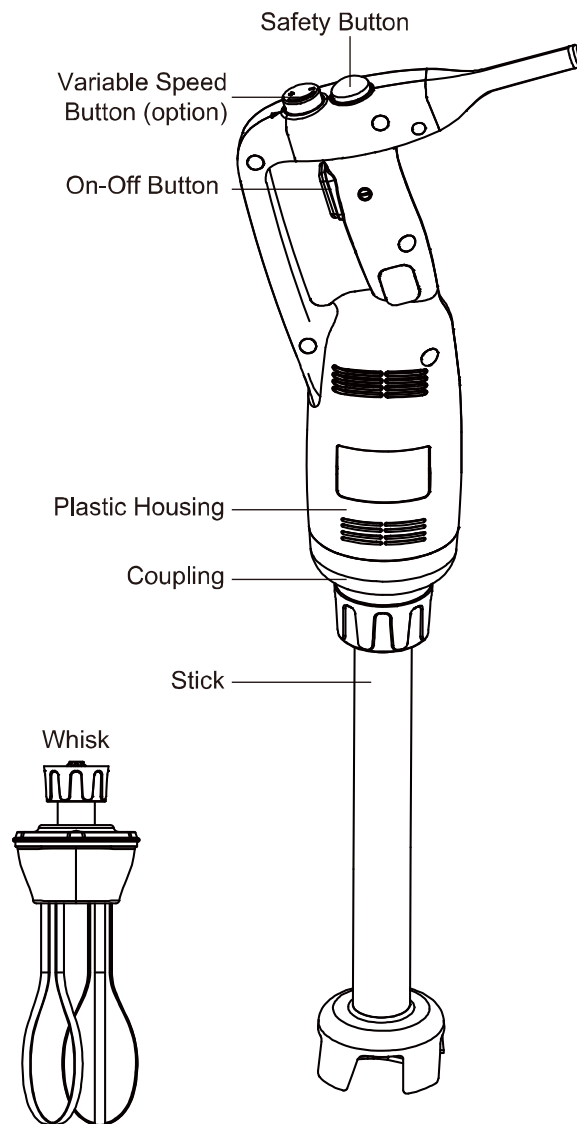
1. Remove the stainless steel shaft from the motor head and rinse under running water.
2. Scrub with soap and warm water for a thorough clean.
3. To ensure the blade is clean, immerse approximately 3/4 of the length of the shaft in a container of soap and warm water and run for two (2) minutes on high.
4. Allow time for air drying before next use of the immersion blender.
5. Never put the motor unit and its handle in water. Clean them with a damp cloth or a sponge.

## Operation

1. Check the cord and plug for damage before operating. DO NOT USE if the cord or plug is damaged in any way. Plug the immersion blender into the 120V outlet. Be sure you are using the correct outlet. Check the cord and plug again before operating.
2. Place the immersion blender into the pot which contains ingredients to be mixed. DO NOT allow more than  $\frac{3}{4}$  of the shaft to be submerged. Doing so can cause damage to the motor and void the warranty.
3. The safety switch is labeled **ENABLE** and is located on the top of the handle. The **ON/OFF** button is located on the inside of the handle. To start the immersion blender, press the **ENABLE** switch and the **ON/OFF** button simultaneously. The **ENABLE** switch will only need to be pressed once to start the unit. It can then be released while keeping the **ON/OFF** button pressed.
4. The immersion blender has a **VARIABLE SPEED** control knob on the top of the handle. Speed can be adjusted during operation as desired. Turning the knob clockwise **INCREASES** motor speed. Turning the knob counterclockwise **DECREASES** motor speed.
5. To prevent any spills, do not leave the immersion blender on as you remove it from the pot. Always wait to turn the blender on until the blade is near the bottom of the pot.

## Operation – Continued

6. Angle the immersion blender and start to stir while keeping the blade off the bottom of the pot. This will create a vortex-like wave to properly mix the ingredients.
7. Once ingredients are mixed, turn the immersion blender off and wait for it to come to a complete stop.
8. Remove the immersion blender from the pot after it has come to a complete stop.
9. Always unplug the immersion blender when done blending
10. If blending a recipe with ice, do not use cubed ice or the blades may be damaged.
11. The blades are extremely **SHARP**. Never touch them while in motion or without cut-resistant gloves.



# Working Position

## Blender

For greater control, we recommend that you hold the blender by the handle and the bottom of the motor unit. It's recommend that you tilt the blender at a slight angle to prevent the bell from touching the bottom of the container. Always make sure that the bell is sufficiently immersed to avoid splashing, and that the air vents of the motor unit do not come into contact with any liquid. For optimum efficiency, two thirds of the shaft should be immersed in the preparation.

## Optional Whisk Function (Not Included - Sold Separately)

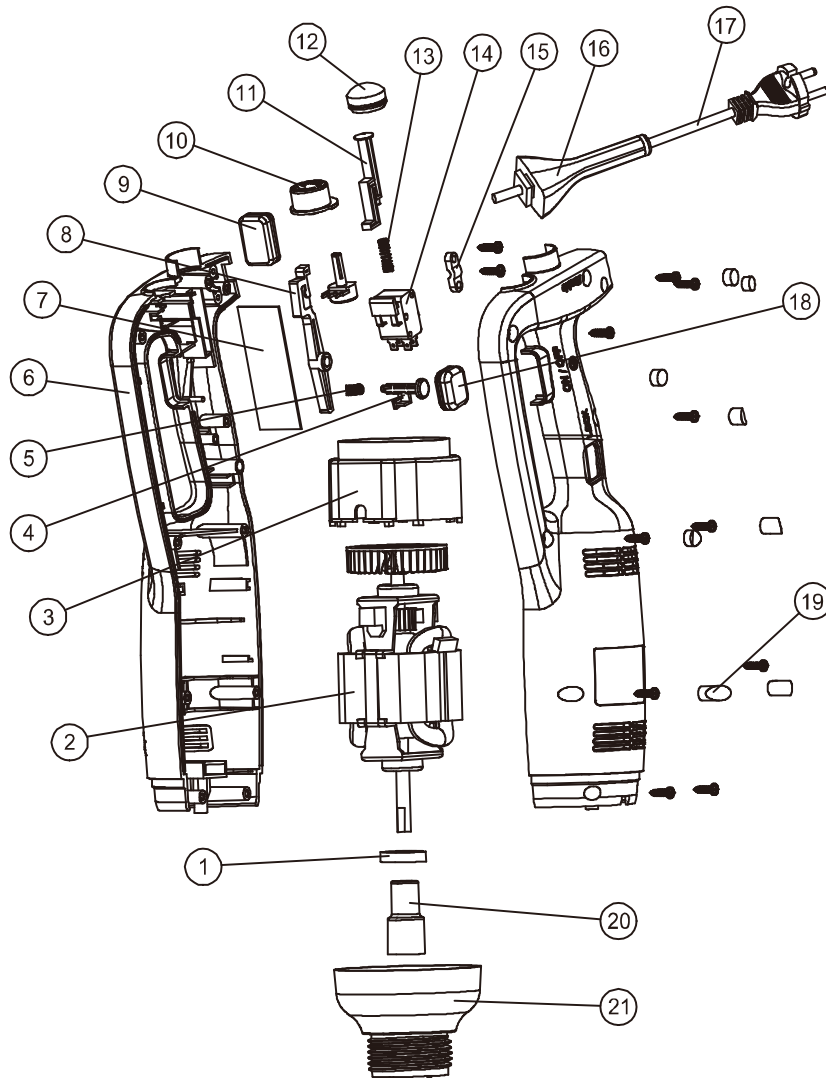
You can also hold the appliance by the handle with one hand, leaving the other hand free to hold the bowl, if necessary. While you whisk the food, we recommend that you move the whisk around in the bowl to ensure that the mixture is completely mixed. We strongly advise you to keep the whisk from touching the sides of the bowl. For maximum efficiency, at least one-fifth of the whisk length should be immersed without immersing the whisk holder into the preparation.

# Troubleshooting

- If the immersion blender does not power on and it has been unplugged, release the ON/OFF button, check the power supply, and then restart the blender.
- If the machine overheats, press the ON/OFF button, and then unplug the appliance. Wait a few minutes for the motor to cool down and the thermal safety mechanism to be reset, then restart the immersion blender.
- If you cannot locate the cause of the problem, release the ON/OFF button, unplug the appliance, and check:
  1. The condition of the plug
  2. That the blades in the bell are free to rotate
  3. The condition of the power cord
  4. That the drive shaft is free to rotate. To do this, remove the bell and test the rotation of the end of drive shaft manually.

# Parts List

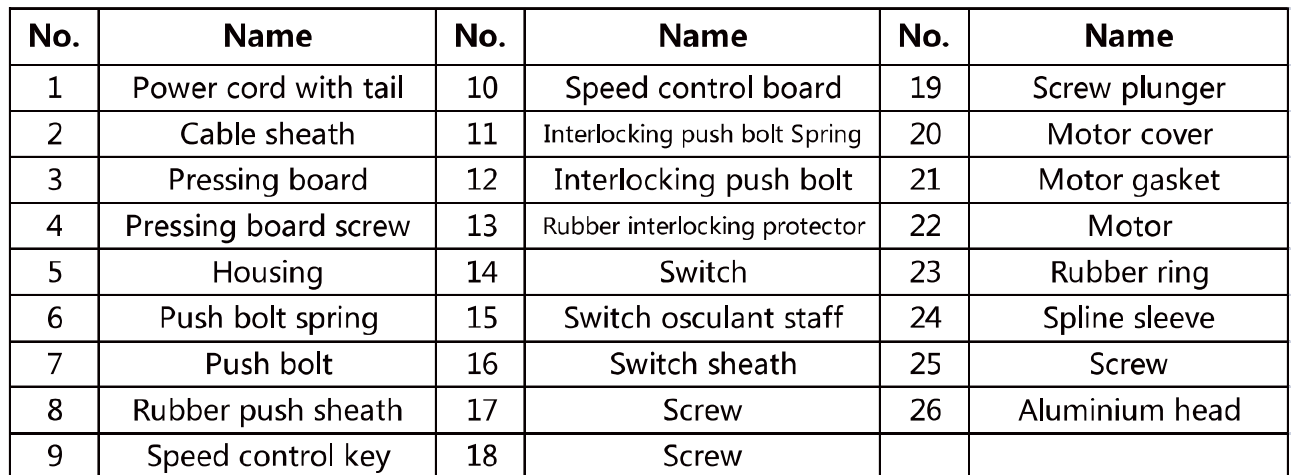
PA9610 / PA9612 / PA9616



No.	Name	No.	Name
1	Rubber ring	12	Rubber push sheath
2	Motor	13	Push bolt Spring
3	Air deflector	14	Switch
4	Interlocking push bolt	15	Pressing board
5	Interlocking push bolt Spring	16	Cable sheath
6	Housing	17	Power cord with tail
7	Speed control board	18	Rubber interlocking protector
8	Switch osculant staff	19	Screw plunger
9	Switch sheath	20	Spline sleeve
10	Speed control key/cover	21	Aluminium head
11	Push bolt		

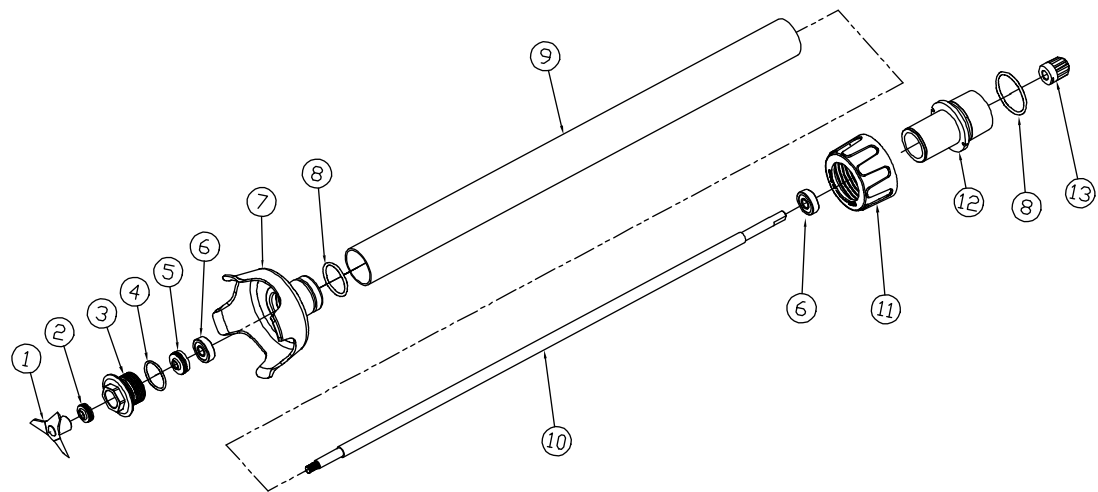


**PA9615 / PA9618 / PA9621**



# Parts List – Continued

## Stainless Steel Shaft



No.	Name	No.	Name	No.	Name
1	Smooth blade	6	Bearing	11	Fastening sleeve
2	Oil Seal	7	Blade bell	12	Connect sleeve
3	Bearing fixing seat	8	Seal ring	13	Spline
4	Seal ring	9	304 S/S tube		
5	Oil Seal	10	Output axis		



## **One Year Limited Warranty**

Sentinel warrants its equipment against defects in materials and workmanship, subject to the following conditions:

Sentinel is warranted for one year, effective from the date of purchase by the original owner. A copy of the original receipt or other proof of purchase is required to obtain warranty coverage. This warranty applies to the original owner only, and is not assignable.

Should any product fail to function in its intended manner under normal use within the limits defined in this warranty, at Sentinel's discretion, such product will be repaired, replaced with a refurbished unit, or replaced with a new unit by Sentinel, after defective unit has been inspected and defect has been confirmed. Sentinel does not assume any liability for extended delays in replacing any item beyond its control. This warranty does not apply to rubber and non-metallic synthetic parts that may need to be replaced due to normal usage, wear or lack of preventative maintenance.

This warranty covers products shipped into the 48 contiguous United States, Hawaii, and metropolitan areas of Alaska and Canada. Warranty coverage on products used outside the 48 contiguous United States, Hawaii and metropolitan areas of Alaska and Canada may vary.

The following conditions are not covered by warranty:

- Equipment failure relating to improper installation, improper utility connection or supply and problems due to improper ventilation.
- Equipment that has not properly been maintained, damage from improper cleaning, and water damage to controls.
- Equipment that has not been used in an appropriate manner, or has been subject to misuse, neglect, abuse, accident, alteration, negligence, damage during transit, delivery or installation, fire, flood, riot, or act of God.
- Equipment that has the model number or serial number removed or altered.
- Equipment on which the security seal has been broken.

If the equipment has been changed, altered, modified, or repaired without express written permission from Sentinel then the manufacturer shall not be liable for any damages to any person or to any property, which may result from the use of this equipment thereafter.

This equipment is intended for commercial use only and this warranty is void if equipment is used in other than a commercial application.

**For warranty and service call 888-585-9440. Please have your model number, serial number and proof of purchase ready.**

"THE FOREGOING WARRANTY IS IN LIEU OF ANY AND ALL WARRANTIES EXPRESSED OR IMPLIED INCLUDING ANY IMPLIED WARRANTY OF MERCHANTABILITY OR FITNESS FOR PARTICULAR PURPOSES AND CONSTITUTES THE ENTIRE LIABILITY OF ACE. IN NO EVENT DOES THE LIMITED WARRANTY EXTEND BEYOND THE TERMS STATED HEREIN."

---