



# F-1501MRJZ-SC

Modular Ice Machine  
Slim-Line Series




F-1501MRJZ-SC  
07/07/23  
Item # 13656


W x D x H  
30" x 27<sup>3/8</sup>" x 34<sup>5/8</sup>"

**F-1501MRJZ-SC**  
Remote Air-Cooled Soft Cubelet  
Shown on optional bin B-900



## Features

- ▶ Durable stainless steel exterior
- ▶ Advanced CleanCycle24™ design 
- ▶ Stainless steel auger with greaseless bearing

- Up to 1417 lbs. of ice production per 24 hrs.
- Infrared bin control for easy cleaning and reliability
- Protected by H-GUARD Plus Antimicrobial Agent 
- 2 second flush cycle every hour
- Flush cycle removes sediment for cleaner ice
- Mount two units, side-by-side, in only 44" of floor space for double the amount of ice production
- R-404A Refrigerant

### Available on Bins:

B-250SF B-500SF B-800SF B-1150SS B-1500SS\*  
B-300SF B-700SF B-900SF B-1300SS B-1650SS\*

Top kit may be required; See Bin Spec Sheets. \*Two unit application only.

### Warranty:

3 Year Parts & Labor on entire machine. 5 Year Parts on Compressor; air-cooled condenser coil. Valid in United States, Canada, Puerto Rico and U.S. Territories. Contact factory for warranty in other countries.

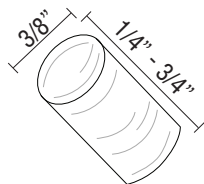
Shipping: (LxWxH) 34.75" x 32" X 40" Volume: 25.74ft<sup>3</sup>

		ICE PRODUCTION		WATER USAGE		ELECTRICAL							
Condenser	Model	Air / Water Temp Lbs. per 24 hours		Potable Gal. per 100 lbs.	Condenser Gal. per 100 lbs.	kWh Used per 100 lbs.	Min. Circuit/ Max. Fuse Size	Amperage	Voltage	Circuit Wires <small>(including ground)</small>	Heat Rejection BTU/hr.	Refrigerant Charge Amount	Net / Ship Weight (lbs.)
		70 / 50 F	90 / 70 F	90 / 70 F	90 / 70 F	90 / 70 F							
Remote	F-1501MRJZ-SC	1417	1101	12.0	N/A	4.30	20A	15.3A	208-230V/60/1	3	13,800	5 lb. 2.5 oz. 9 lbs. 9 oz. †	300 / 325

†(condenser)

Power cord not included

## Soft Cubelet Dimensions\*



\* approximate size in inches, image not to scale

## Operating Limits

- Ambient Temp Range 45 - 100°F
- Water Temp Range 45 - 90°F
- Water Pressure 10 - 113 PSIG
- Voltage Range 187-253V

## Service

- Panels easily removed and all components accessible for service.
- Removable/cleanable air filter (Air-cooled model only)
- Allow 6" (15 cm) clearance at rear and sides, and 24" (61 cm) clearance at top for proper air circulation and ease of maintenance/service.

## Plumbing

- Ice maker Water Supply Line: Minimum 1/4" Nominal ID Copper Water Tubing or Equivalent
- Ice maker Drain Line: Minimum 3/4" Nominal ID Hard Pipe or Equivalent

**Line sets for Z models require brazing. Z model head must match Z model remote condenser.**

Hoshizaki reserves the right to change specifications without notice.



# F-1501MRJZ-SC

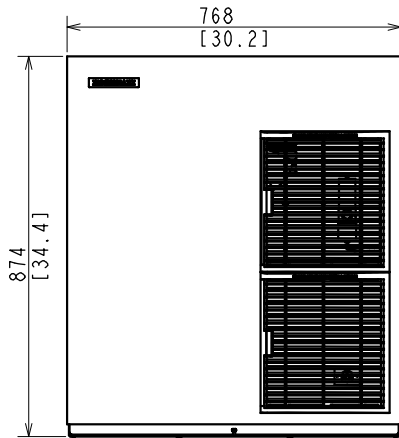
Modular Ice Machine  
Slim-Line Series

F-1501MRJZ-SC

07/07/23

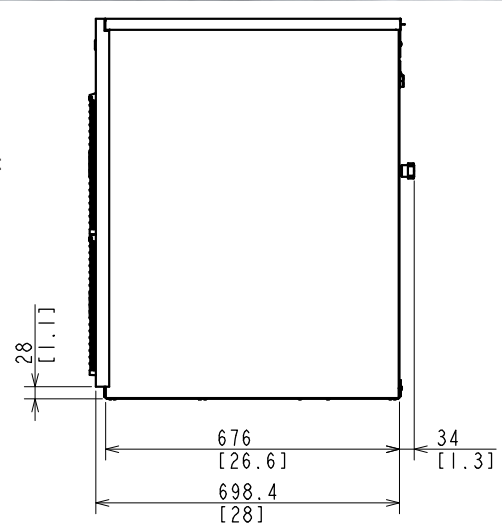
Item # 13656

FRONT VIEW

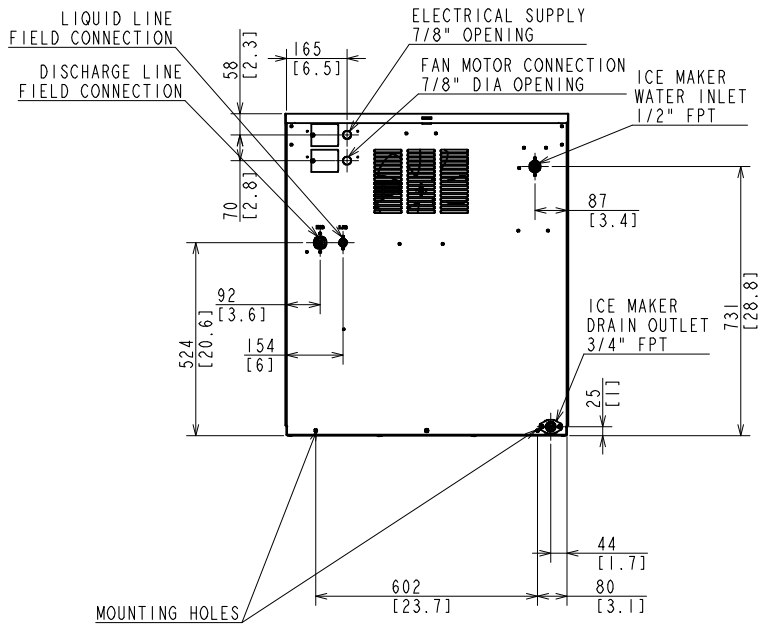


SIDE VIEW

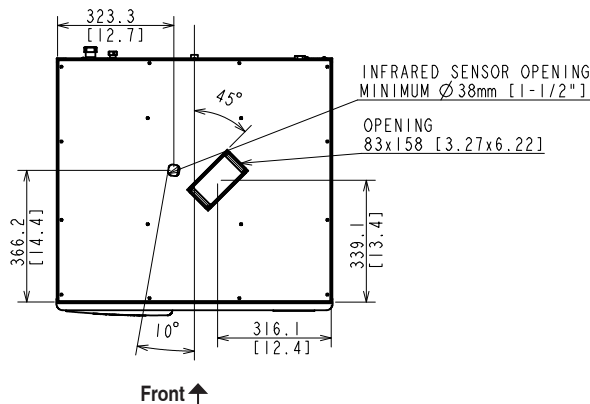
Front  
→



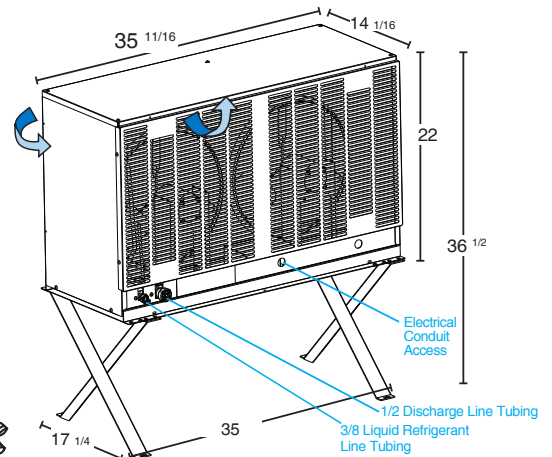
REAR VIEW



BOTTOM VIEW



**URC-14FZ Remote Condenser (Sold Separately)**  
(W x D x H) 35 <sup>11</sup>/<sub>16</sub> x 14 <sup>1</sup>/<sub>16</sub> x 36 <sup>1</sup>/<sub>2</sub>  
For Use with F-1501MRJZ-SC



**Braided Line Sets**

(Sold Separately)

25' HS-5604

35' HS-5605

55' HS-5606

Voltage supply for the URC Remote Condenser is supplied from the Ice Maker. No additional circuit is required.